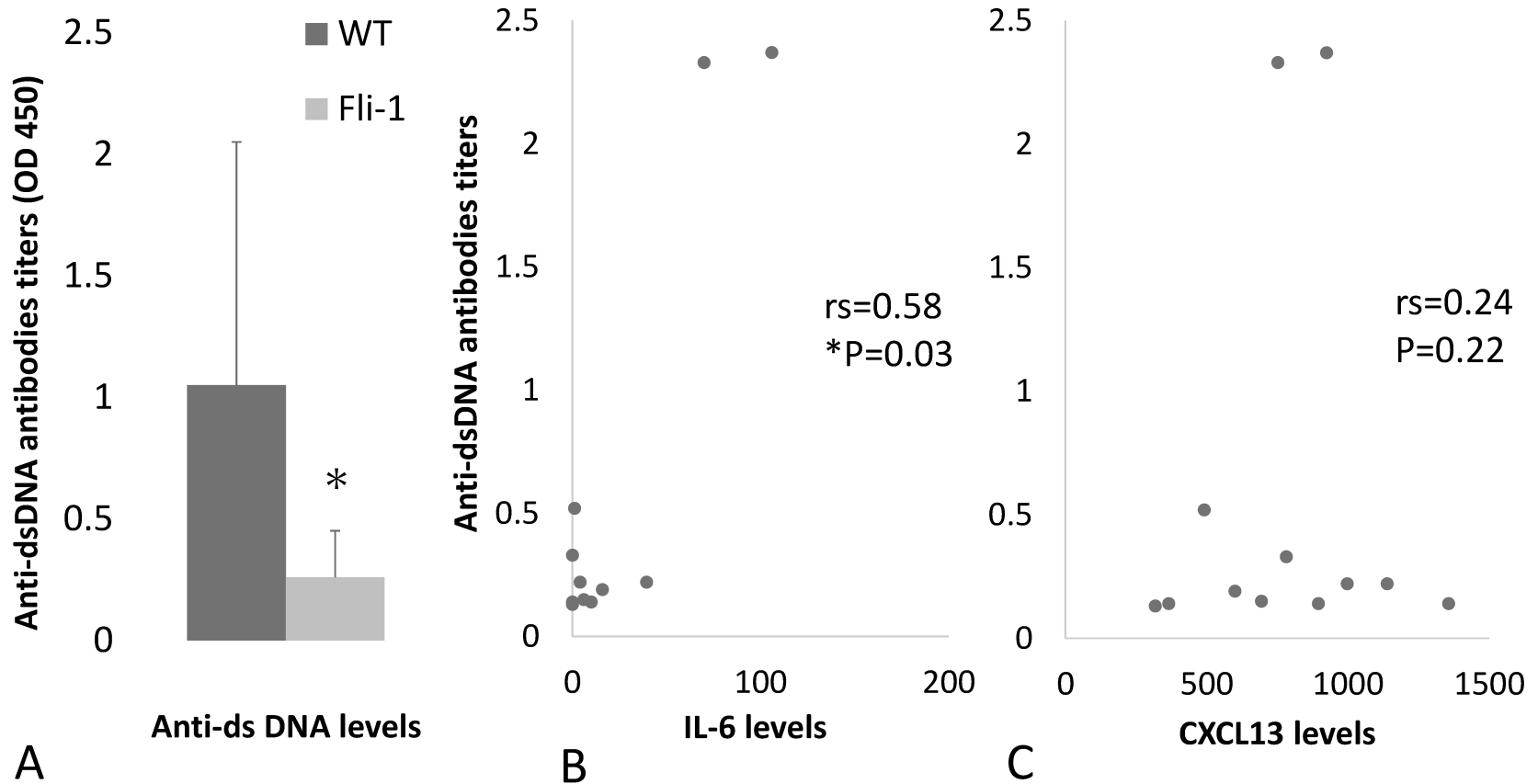
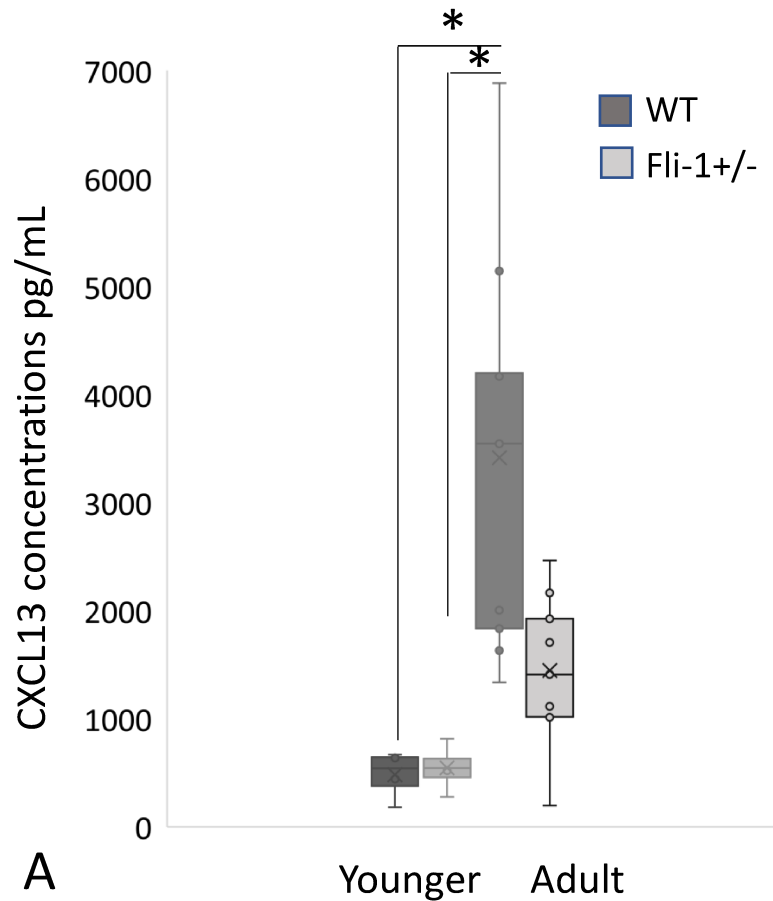


Supplementary Figure 1

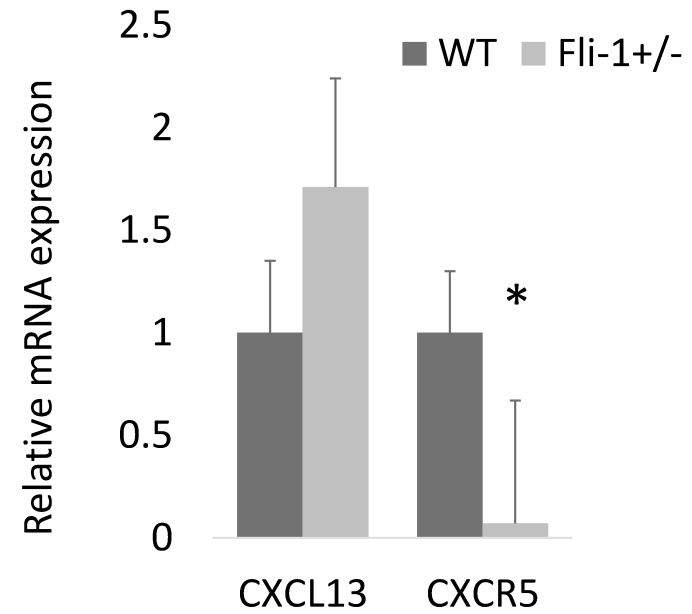


* p<0.05

Serum CXCL13 concentrations in younger MRL/lpr mice compared to adult MRL/lpr mice
(Younger: 7-9 weeks old, N = 4)
(Adult: 21-36 weeks old, N = 9)

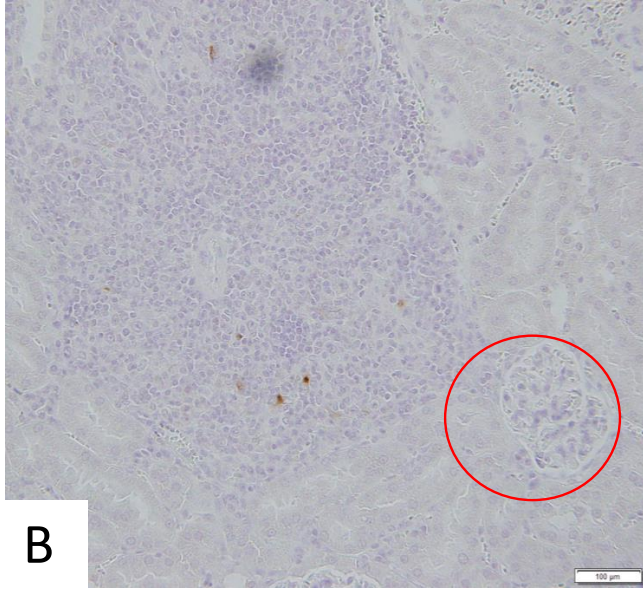
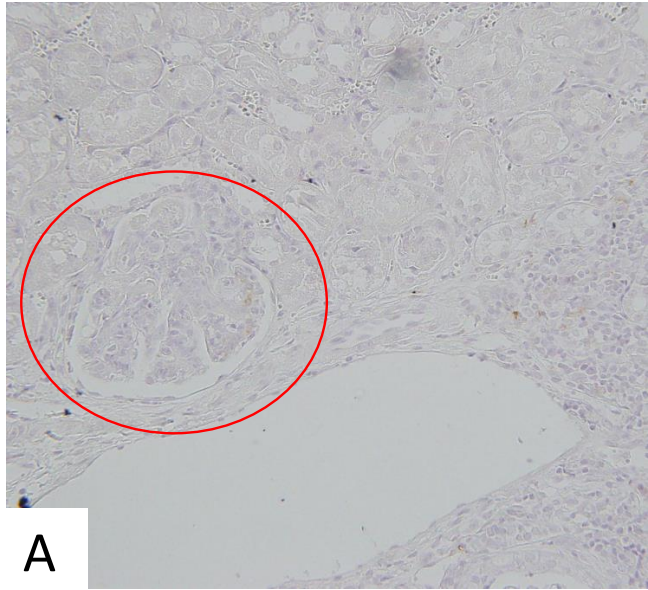


Relative mRNA expression of CXCL13 and CXCR5 in younger MRL/lpr mice
(7-9 weeks old, N = 3-4)

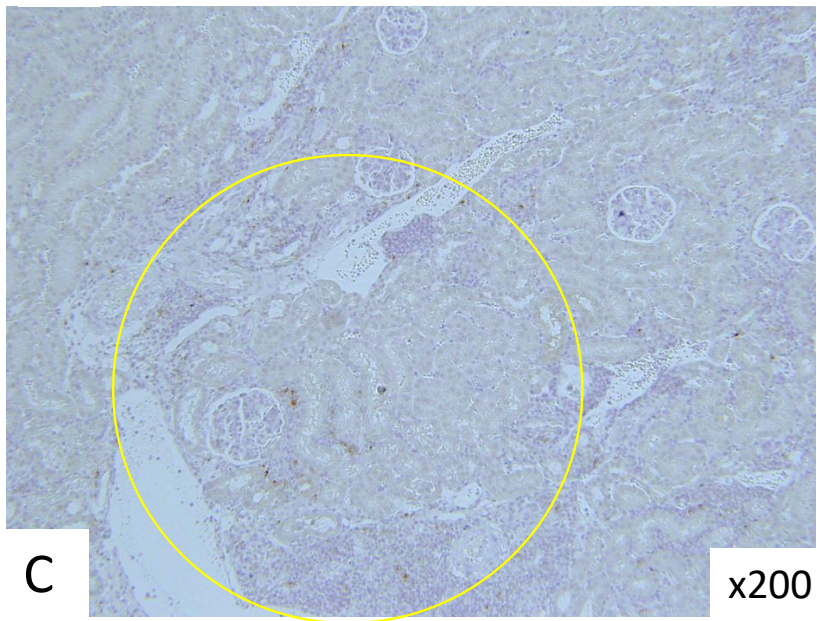


* p<0.05

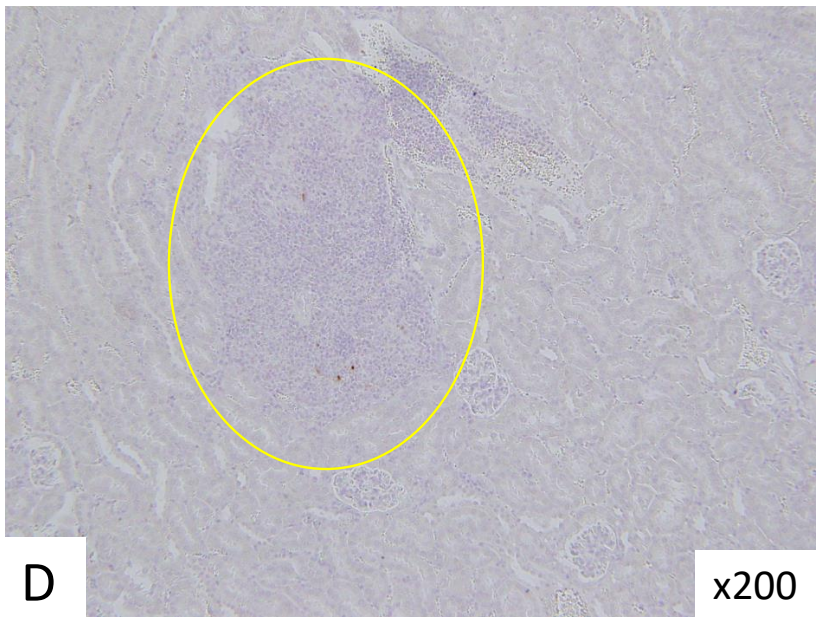
Supplementary Figure 3



x400

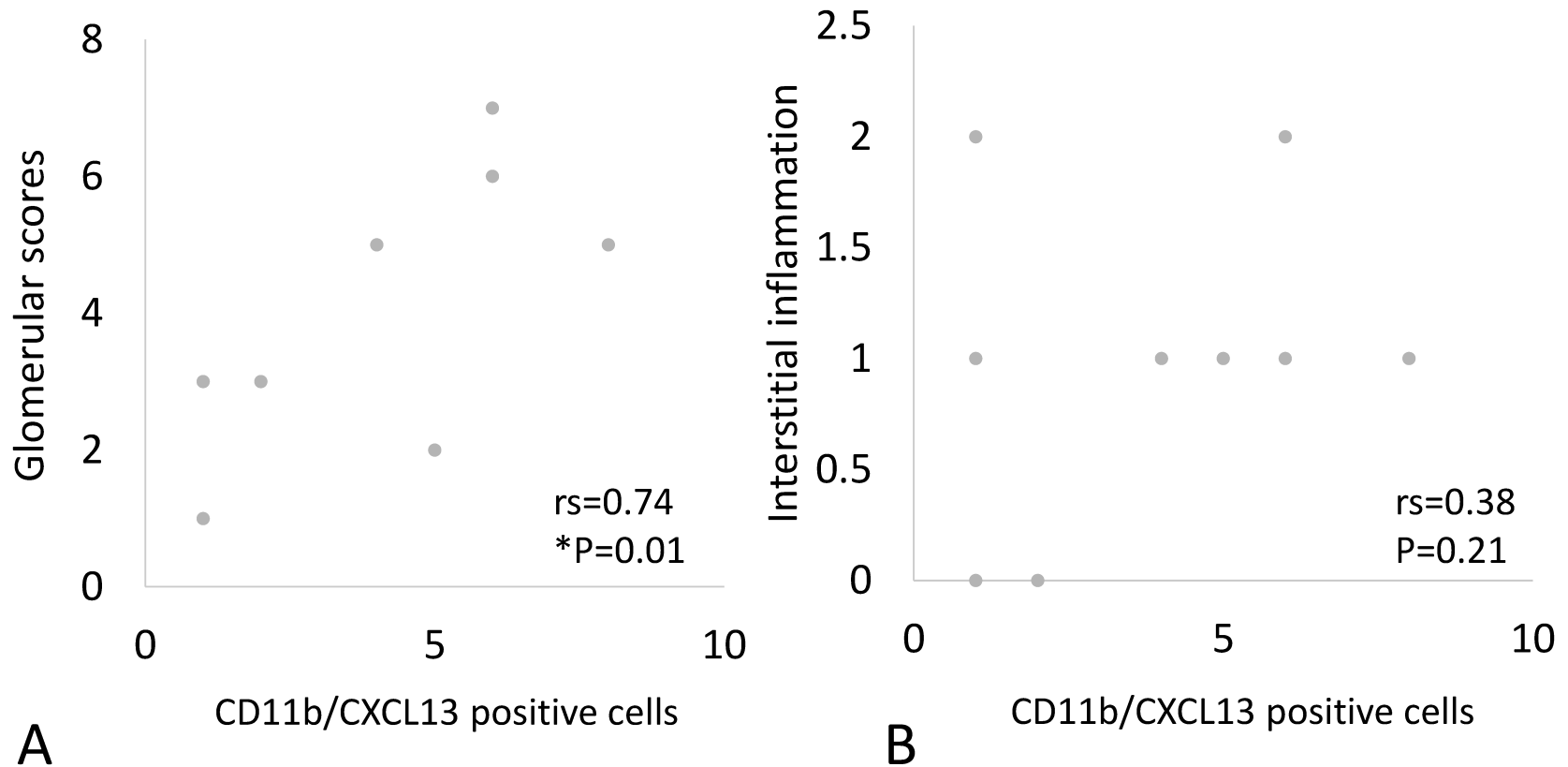


x200



x200

Supplementary Figure 4

* $p < 0.05$