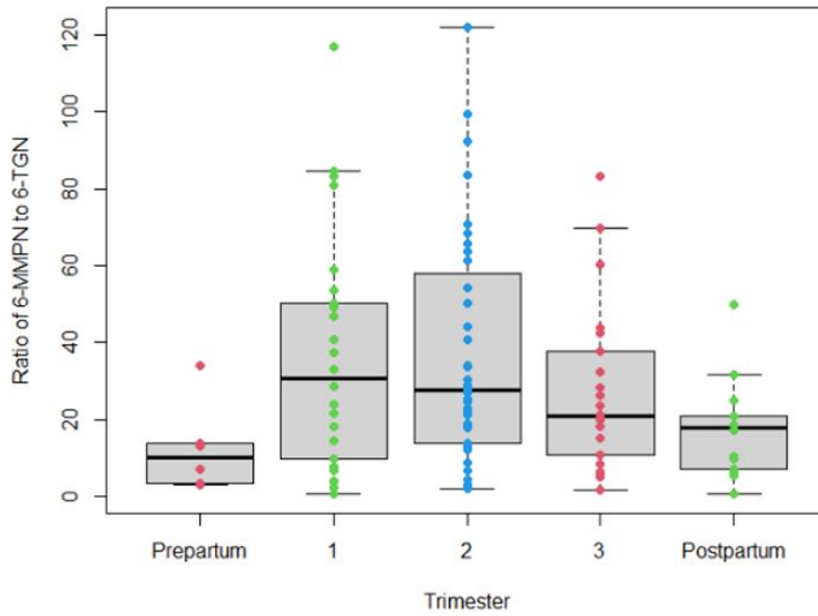
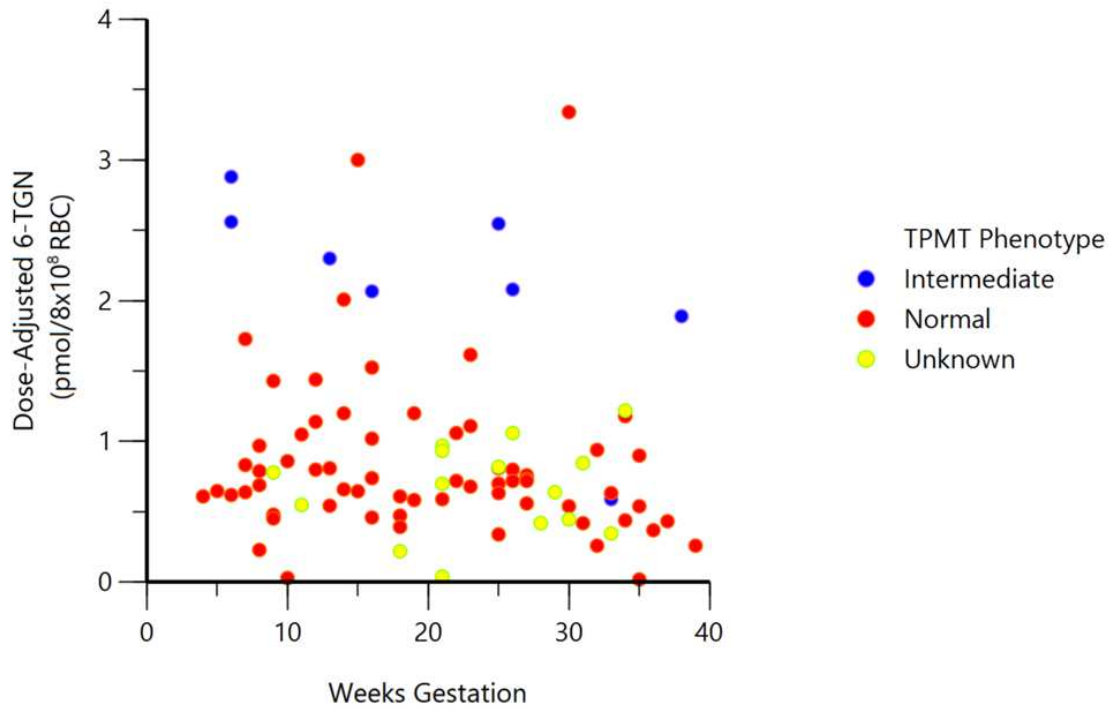


Azathioprine Metabolite Levels and Outcomes During Pregnancies in Women with Rheumatic Disease

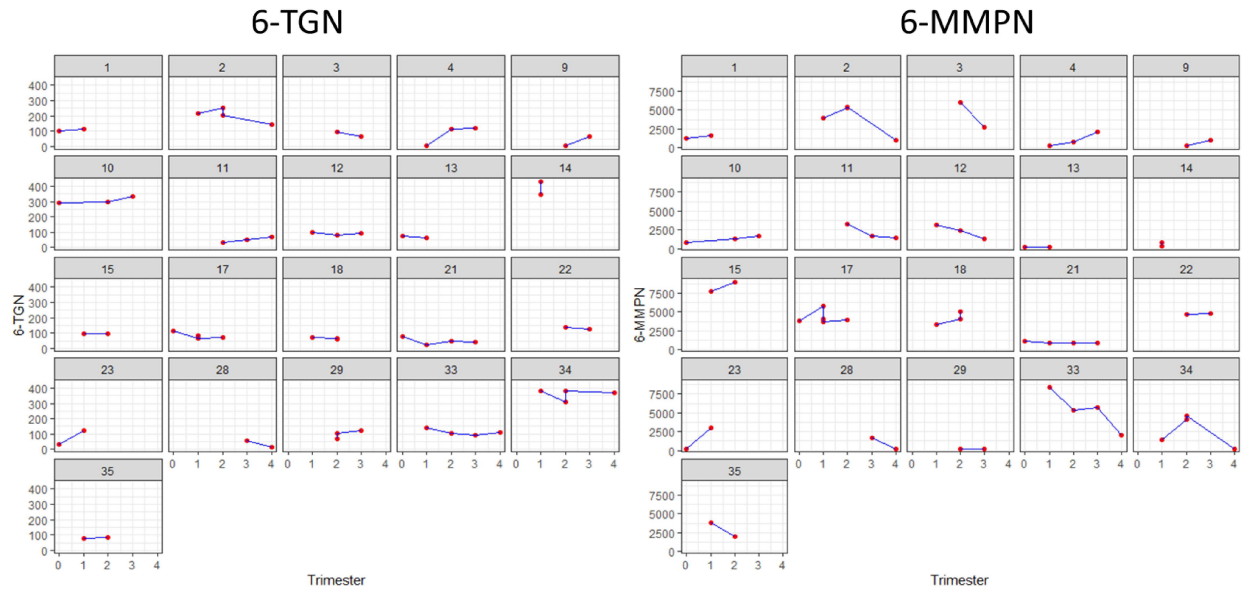
Supplemental Materials

Supplemental Figure S1 Ratio of 6-MMPN to 6-TGN throughout pregnancy and peripartum.



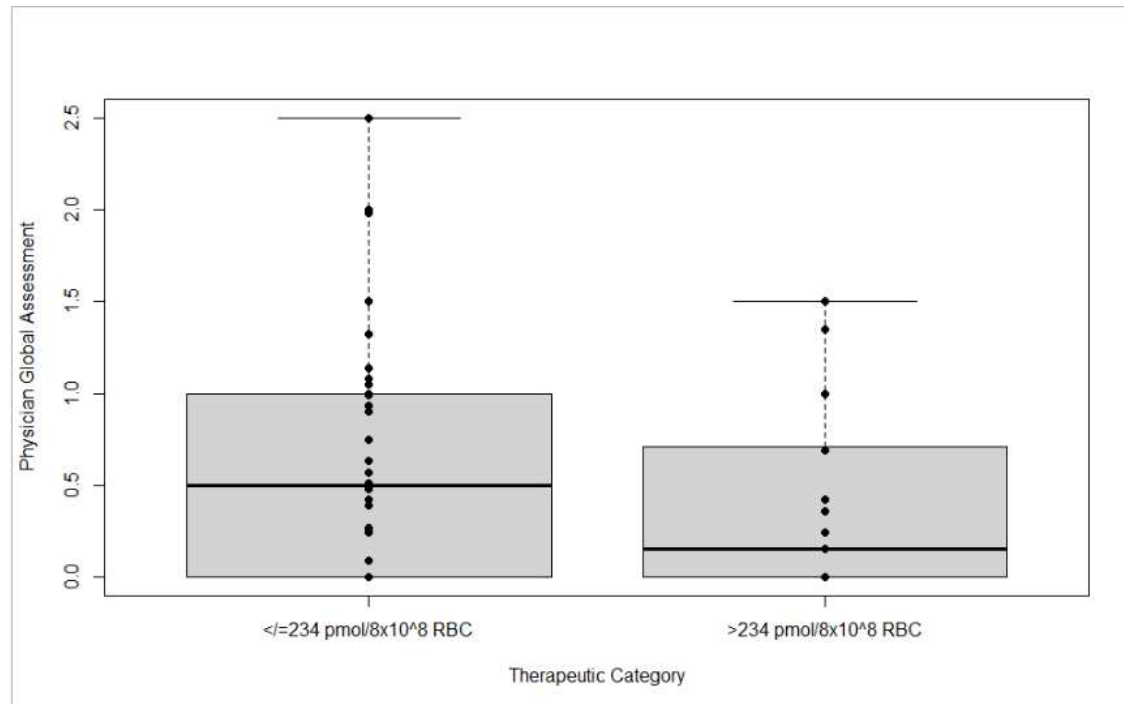
Supplemental Figure S2 Dose-adjusted 6-TGN and TPMT phenotype.

Supplemental Figure S3 Individual trajectories of AZA metabolite levels in patients without dose changes. Trimester 0 represents pre-pregnancy and Trimester 4 represents postpartum.



Supplemental Figure S4 SLE Physician Global Assessment and 6-TGN therapeutic category.

Grey area represents the interquartile range whereas the solid black line represents the median.



Supplemental Table 1: Dose changes in patients with elevated 6-MMPN.

| Patient Number | 6-MMPN pmol/8X10 ⁸ RBC | Medication Change |
|----------------|-----------------------------------|--|
| 1 | 6062 | 150 mg (1.9 mg/kg) -> No change |
| 2 | 6022 | 150 mg (2.1 mg/kg) -> No change |
| 2 | 5929 | 150 mg (2.1 mg/kg) -> 100 mg (1.4 mg/kg) |
| 3 | 8308 | Discontinue AZA 150 mg (1.2 mg/kg), start mycophenolate (postpartum) |
| 4 | 7767 | 150 mg (2.3 mg/kg) -> No change |
| 4 | 8955 | 150 mg (2.1 mg/kg) -> 100 mg (1.4 mg/kg) |
| 5 | 12859 | 200 mg (1.8 mg/kg) -> 50 mg (0.5 mg/kg) |
| 6 | 5758 | 150 mg (1.9 mg/kg) -> 125 mg (1.6 mg/kg) |
| 7 | 7483 | 175 mg (2.3 mg/kg) -> No change |
| 7 | 9303 | 175 mg (2.3 mg/kg) -> 150 mg (1.8 mg/kg) |
| 8 | 7908 | 150 mg (1.6 mg/kg) -> 100 mg (1.1 mg/kg) |
| 9 | 8433 | 100 mg (2.1 mg/kg) -> No change |
| 10 | 13184 | 150 mg (1.5 mg/kg) -> 100 mg -> 50 mg (0.5 mg/kg) |