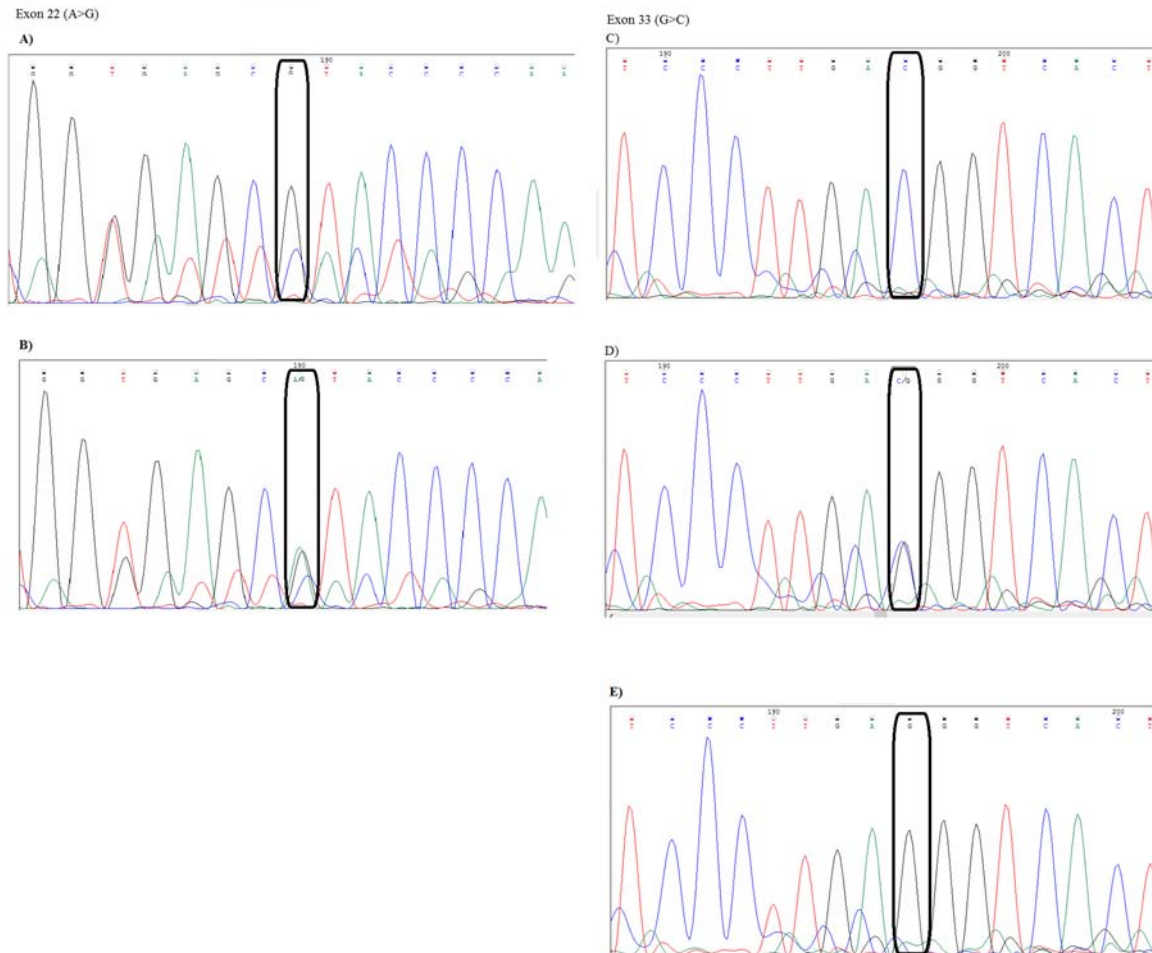


**Supplementary Figure-1. Electropherogram of sequencing analysis at CR1 codon region showing GG (A), AG (B) genotype for exon 22 (A>G) polymorphism and CC (C), CG (D) and GG (E) for exon 33 (G>C) polymorphism.**



**Supplementary Figure-2. LD plot of CR1 polymorphisms (intron 27, exon 22 and exon 33) in SLE patients and healthy controls.** Values inside cells are D' value. Boxes filled with red, pink and white correspond to LD magnitude of  $|D'| > 0.9$ ,  $0.9 > |D'| \geq 0.5$  and  $|D'| < 0.5$ , respectively. Haplotype plot was constructed by SNPalyze software (Dynacom, Yokohama, Japan).

**SLE patients**

	Intron 27	EXON-22	EXON-33
Intron 27			
EXON-22	0.7405		
EXON-33	0.6381	0.9434	

**Healthy Controls**

	Intron 27	EXON-22	EXON-33
Intron 27			
EXON-22	0.7924		
EXON-33	0.7262	0.9343	