

Supplementary Data 2: Figure legends

Supplementary Figure 2. SSPGA (mm) and LFA-REAL (mm) in all visits, those with SSPGA <33 mm and with SSPGA \geq 33 mm

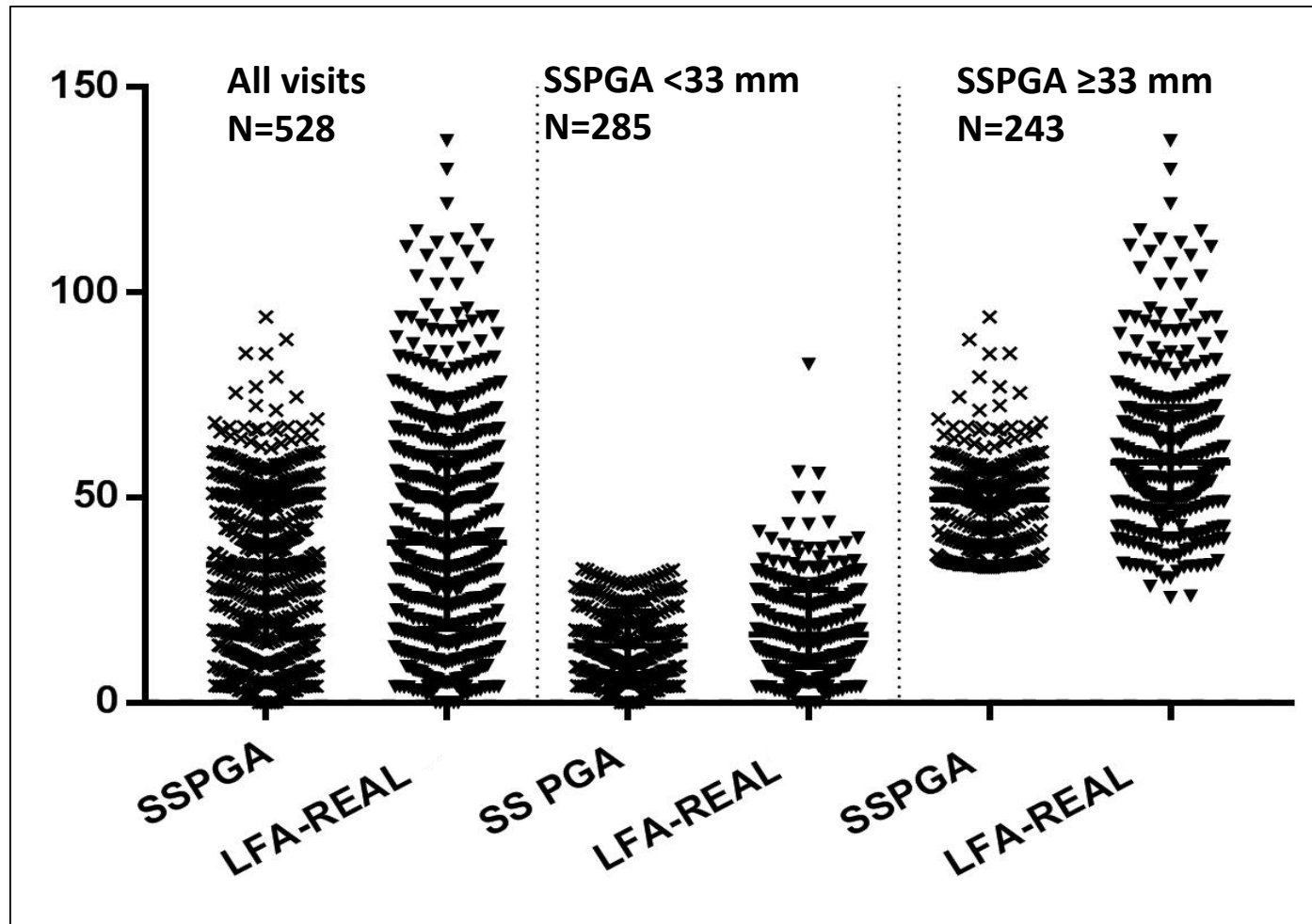
Supplementary Figure 3. Changes in SSPGA (mm) and LFA-REAL (mm) (compared to the initial visit) in all visit pairs, and those with improvement or not by SRI-4

Supplementary Figures 4A to 4D. ROC curves of SSPGA and LFA-REAL in relation to SRI-4 (3A, 3B) and BICLA (3C, 3D)

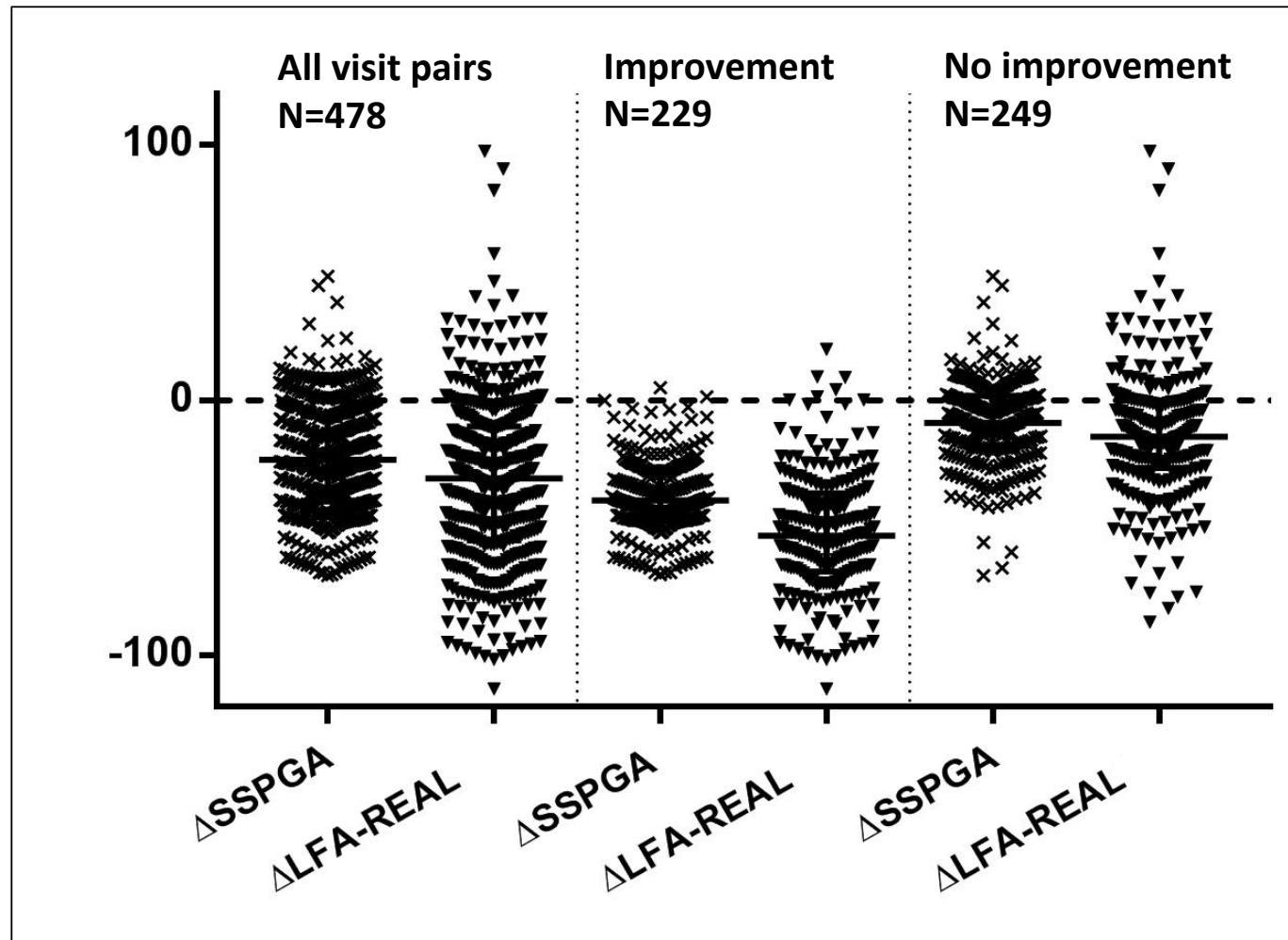
Supplementary Figures 5A and 5B. Thresholds of improvement in SSPGA and LFA-REAL corresponding to SRI-4

Supplementary Figures 6A and 6B. Thresholds of improvement in SSPGA and LFA-REAL corresponding to BICLA

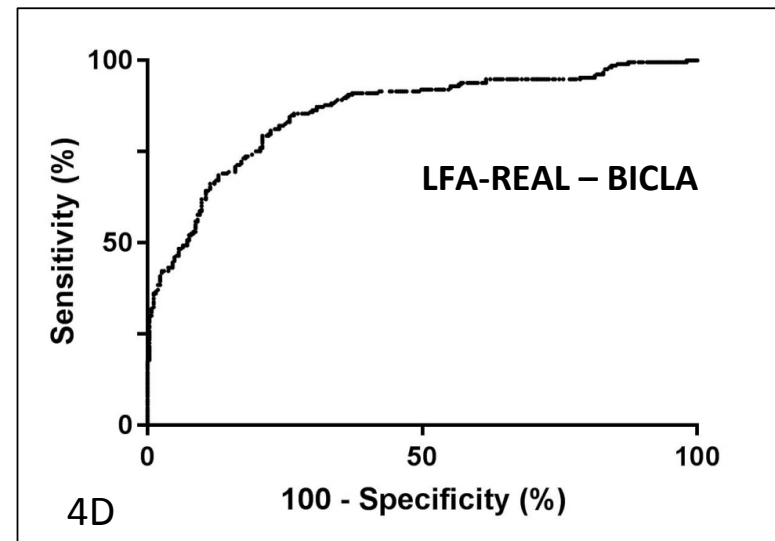
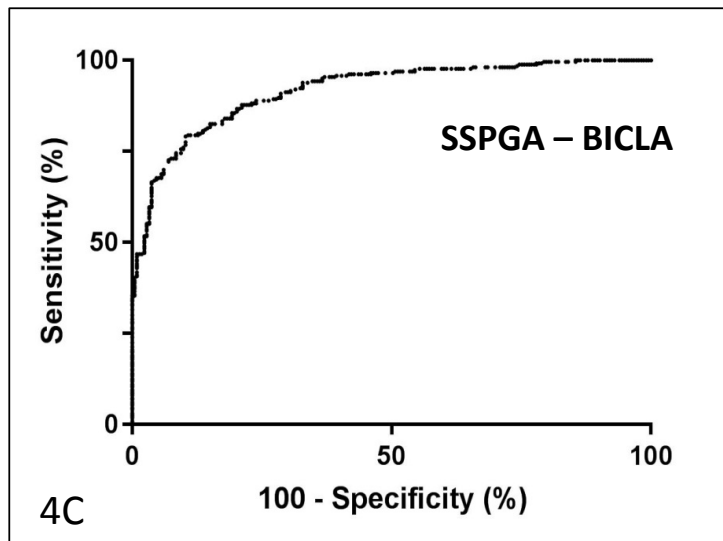
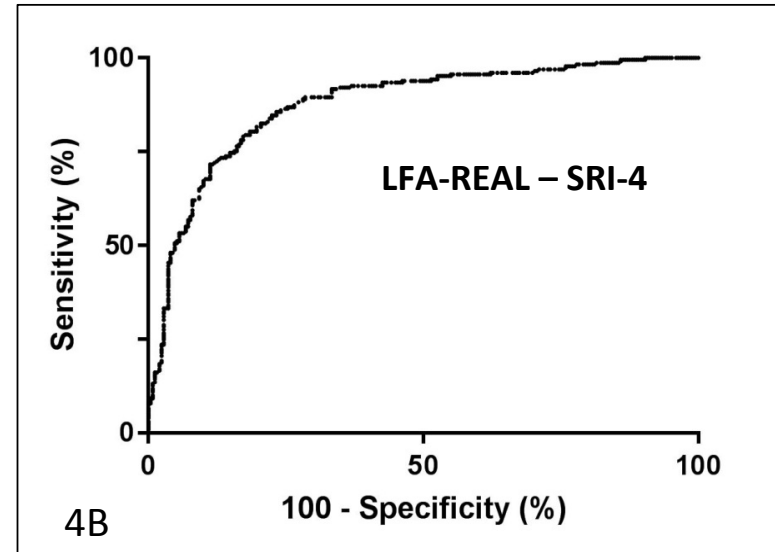
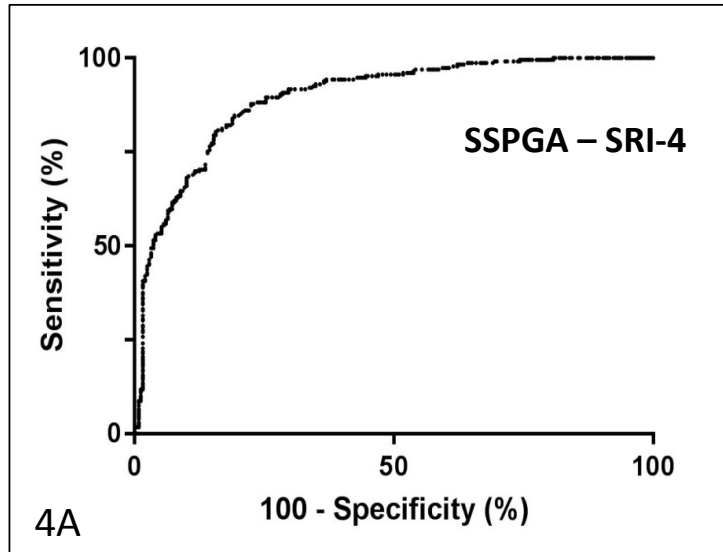
Supplementary Figure 2.



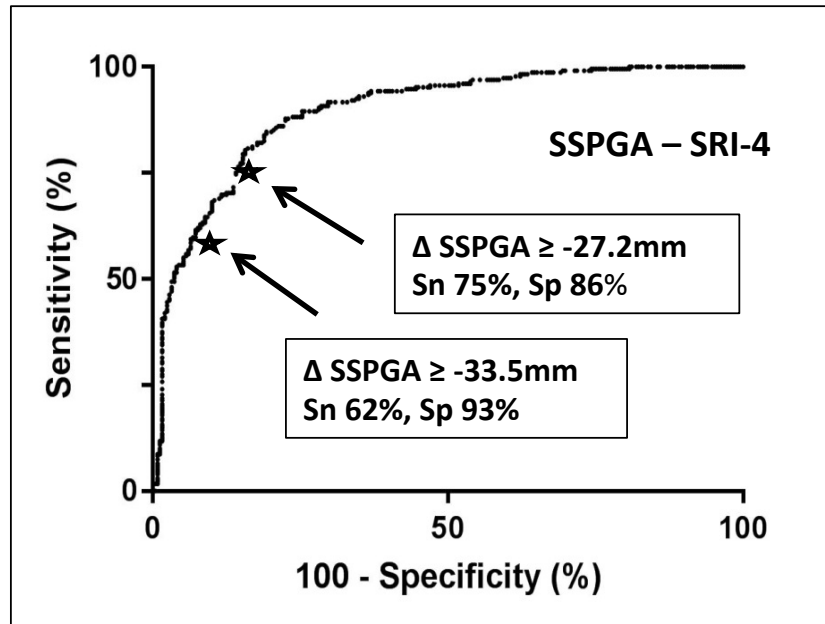
Supplementary Figure 3.



Supplementary Figures 4A to 4D.

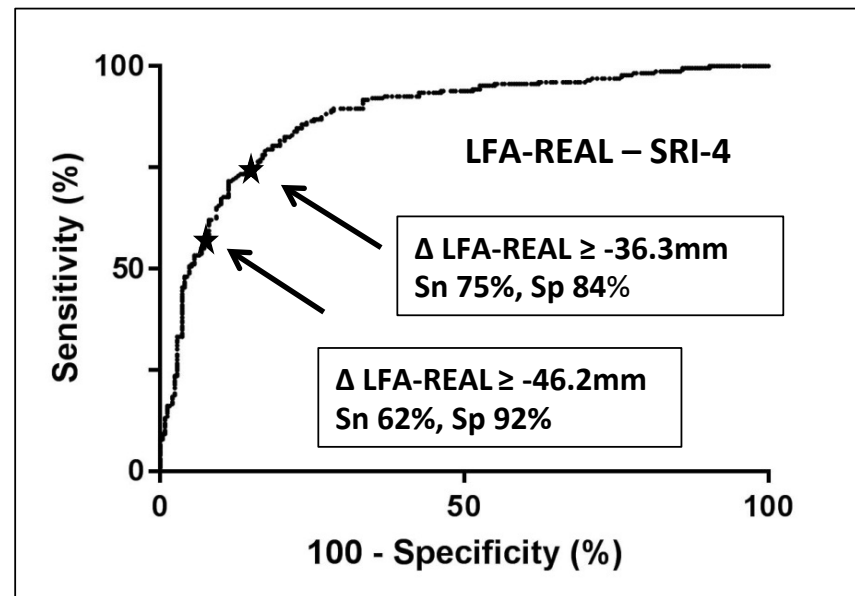


5A

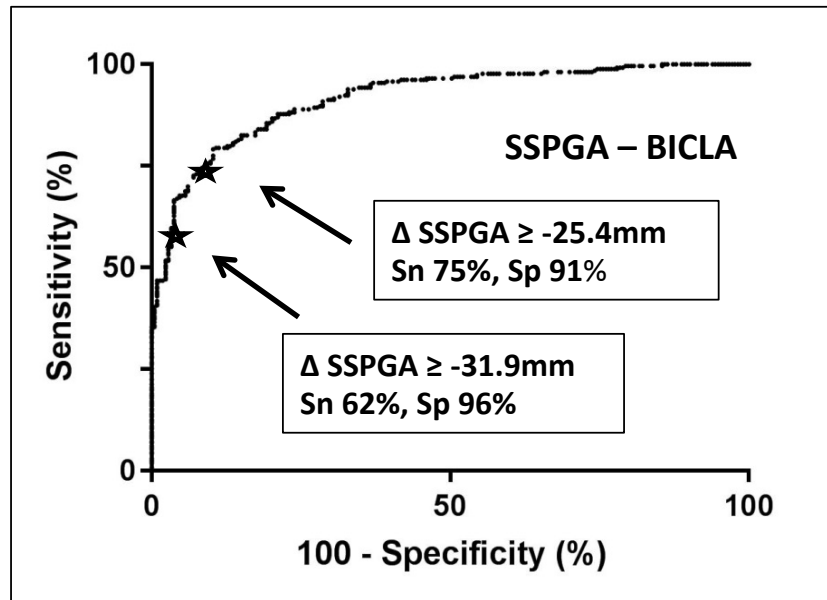


Supplementary Figures 5A and 5B.

5B



6A



Supplementary Figures 6A and 6B.

6B

