


# Outcomes of pregnancy and associated factors in sub-Saharan African women with systemic lupus erythematosus: a scoping review

Mickael Essouma ,<sup>1</sup> Jan René Nkeck,<sup>1</sup> Kodoume Motolouze,<sup>2</sup> Jean Joel Bigna,<sup>3</sup> Paul Tchaptchet,<sup>1</sup> Grâce Anita Nkoro,<sup>4</sup> Stéphane Ralandison,<sup>5</sup> Eric Hachulla<sup>6</sup>

**To cite:** Essouma M, Nkeck JR, Motolouze K, *et al.* Outcomes of pregnancy and associated factors in sub-Saharan African women with systemic lupus erythematosus: a scoping review. *Lupus Science & Medicine* 2020;**7**:e000400. doi:10.1136/lupus-2020-000400

► Additional material is published online only. To view please visit the journal online (<http://dx.doi.org/10.1136/lupus-2020-000400>).

Poster presentation P78, published in *Lupus Science and Medicine*, March 2020, Vol 7, suppl 1, doi: 10.1136/lupus-2020-eurolupus.123

Received 24 March 2020  
Revised 13 May 2020  
Accepted 18 May 2020



© Author(s) (or their employer(s)) 2020. Re-use permitted under CC BY-NC. No commercial re-use. See rights and permissions. Published by BMJ.

For numbered affiliations see end of article.

## Correspondence to

Dr Mickael Essouma; [essmic@rocketmail.com](mailto:essmic@rocketmail.com)

## ABSTRACT

**Objective** To scope and summarise available literature on the outcomes of pregnancy and associated factors in sub-Saharan African women with SLE.

**Methods** Electronic databases and reference lists of retrieved articles were searched to identify relevant studies published from 1 January 2000 to 28 October 2019. Data were combined through narrative synthesis.

**Results** We included four studies retrospectively reporting a total of 137 pregnancies in 102 women over a 26-year period. Mean age at conception ranged from 27.2 to 39.9 years. Kidney damage, the predominant organ manifestation before conception, was reported in 43 (42.2%) patients. Ninety-seven (70.8%) pregnancies resulted in 98 live births. SLE flares occurred in 44 (32.2%) pregnancies, mainly skin (20.4%) and renal (18.2%) flares. Major adverse pregnancy outcomes (APOs) were preterm birth 38.8%, low birth weight 29.8%, pregnancy loss 29.2% and pre-eclampsia 24.8%. The main factors associated with APOs were nephritis and SLE flares.

**Conclusion** Over two-thirds of pregnancies resulted in live birth in this cohort of sub-Saharan African women with SLE. The main APOs and associated factors described in other parts of the world are also seen in this region, but with high rates of APOs. A large prospective multinational study is warranted for more compelling evidence.

## INTRODUCTION

Extensive research on SLE pregnancies has dispelled the myth that SLE is incompatible with pregnancy, and led to the development of recommendations on planning and management of pregnancy in women with SLE.<sup>1–12</sup> As a result, the overall outcome of SLE pregnancies has markedly improved in developed countries over the last decades.<sup>13 14</sup>

SLE predominantly affects young women in sub-Saharan Africa as well.<sup>15</sup> However, there is limited knowledge on pregnancy in sub-Saharan African women with SLE. Relevant data are needed to fill this knowledge gap and inform treatment and preventive strategies within the region. We therefore conducted a

review to map and collate available evidence on the outcomes of pregnancy and associated factors in sub-Saharan African women with SLE.

## METHODS

This review is written according to standards for reporting scoping reviews.<sup>16 17</sup>

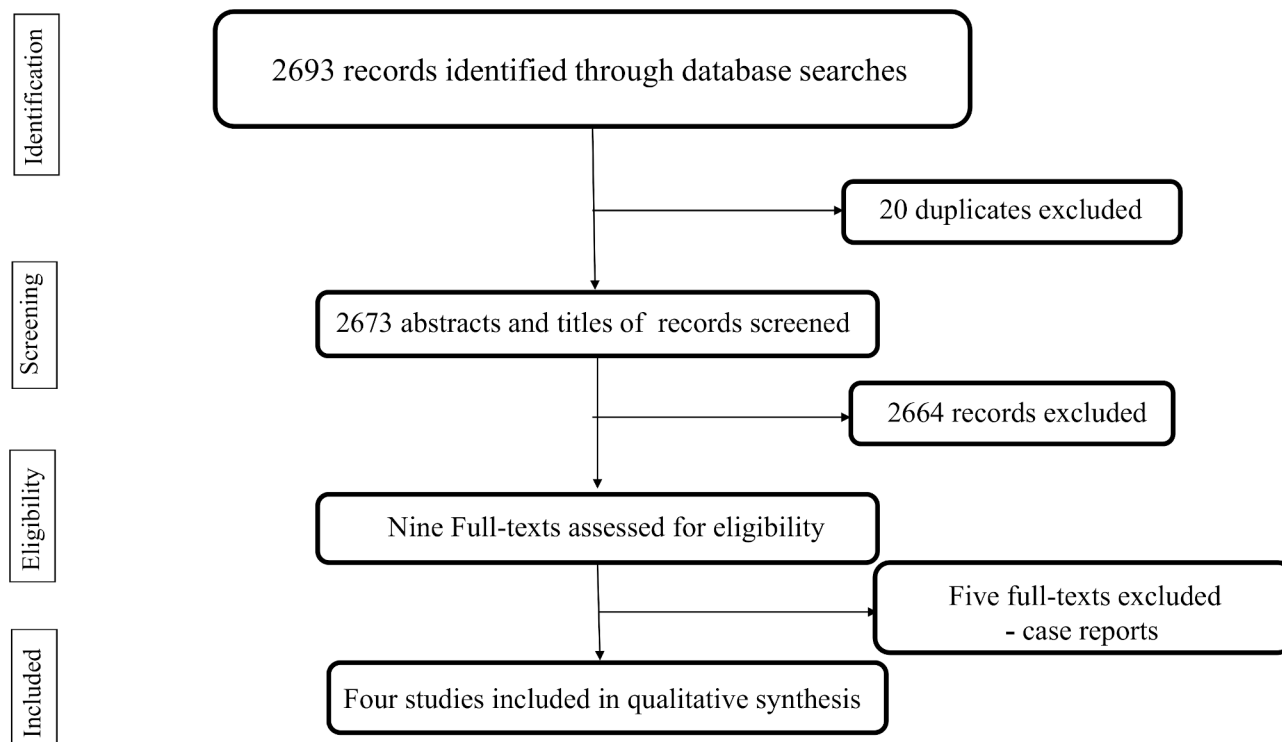
## Data sources and search strategy

MEDLINE (PubMed), ExcerptaMedica database (EMBASE) and African Journals Online (AJOL) were searched to select pertinent articles released from 1 January 2000 to 28 October 2019. The search strategy used in PubMed (online supplementary table S1) combined MeSH terms referring to SLE, pregnancy as well as the names of sub-Saharan African countries,<sup>18</sup> and was adapted to fit with search requirements in EMBASE and AJOL. These electronic searches were supplemented by hand searches.

## Study selection

Only longitudinal studies published in English or French language were included. Participants were pregnant sub-Saharan African women with SLE (according to the 1997 American College of Rheumatology classification criteria<sup>19</sup>) residing in sub-Saharan Africa. Parameters of interest were outcomes of pregnancy and associated factors.

Study selection was independently run by two investigators (ME and JRN), and discrepancies between both of them were resolved with the arbitrage of a third investigator (JJB). After initial screening of titles and abstracts, the full texts of papers deemed potentially eligible were further assessed before final inclusion.



**Figure 1** PRISMA flow chart of the study selection process.

### Data charting

The following data were independently extracted by two investigators (ME and KM): study characteristics, year of publication, baseline demographics, SLE characteristics and parameters of interest. We performed a narrative synthesis due to small study sample sizes and high heterogeneity across studies.

## RESULTS

### Study selection

Of 2693 papers, four<sup>20–23</sup> were included in this review as described in [figure 1](#).

### Characteristics of included studies

The four studies retrospectively reported a total of 137 pregnancies in 102 women who had a joint follow-up in Rheumatology/Internal Medicine and Obstetrics urban centres during 1992–2018. Details on study characteristics are found in [table 1](#).

### Baseline demographics and SLE features

Patients' demographics are summarised in [table 1](#). The mean age at conception ranged from 27.2 to 39.9 years. Before conception, 43 (42.2%) women had kidney damage, the most common organ manifestation. Of these, 40 had biopsy-proven lupus nephritis (LN): eight class IV, one class II, two class III and 29 unclassified.

### SLE activity in pregnancy

Flares were observed in 44 (32.2%) pregnancies: 28 (20.4%) cutaneous, 25 (18.2%) renal and 28/90 (31.1%) joint flares. Anti-Ro/La, antiphospholipid (aPL),

antinuclear antibodies and anti-deoxyribonucleic acid (anti-DNA) autoantibodies were found in 15/48, 7/50, 6/7 and 5/6 pregnancies, respectively, while low complement levels were detected in 14/51 pregnancies.

### Pregnancy outcomes

In mothers, there were overall 97 (70.8%) successful deliveries with live birth, 40 pregnancy losses (29.2%) and 34 (24.8%) pregnancies with pre-eclampsia. Of 40 pregnancy losses, 27 were miscarriages, nine stillbirths and four therapeutic abortions. No maternal deaths were recorded. [Figure 2](#) highlights the main obstetric outcomes.

Of 98 live births, 60 (61.2%) were full term and 38 (38.8%) preterm. Other adverse neonatal outcomes were neonatal lupus 3 (3.1%), low birth weight 28/94 (29.8%) and neonatal death 16/39. The main neonatal outcomes are depicted in [figure 3](#).

### Factors potentially associated with adverse pregnancy outcomes (APOs)

Preterm delivery, fetal loss, pre-eclampsia and neonatal death respectively occurred in 18, 17, 11 and three of 49 pregnancies in which (history of/active) LN was documented. Preterm delivery and intrauterine growth restriction respectively occurred in six and three of 19 pregnancies in which Raynaud's phenomenon was observed. Fetal loss, preterm delivery and hypertensive disorders respectively occurred in seven, six and three of 17 pregnancies in which SLE flares were observed. Of 15 pregnancies in which hypertensive disorders were diagnosed, five and four ended with preterm birth and fetal loss respectively.

**Table 1** Characteristics of studies reporting the outcomes of pregnancy in sub-Saharan African women with SLE during 2000–2019

Study	Study design	Country	Setting	Locality	Period of recruitment	Duration of follow-up	Number of participants/number of pregnancies	Black ethnicity (% of pregnancies)	Mean age at diagnosis of SLE, years	Duration of SLE (mean), years	Number of planned pregnancies	Mean age at conception (range), years	Number of fetus(es) per pregnancy	Delivery by caesarean section (% of pregnancies)	Mean gestational age at delivery	Mean birth weight (kg)
Whitelaw <i>et al</i> <sup>20</sup>	Retrospective	South Africa	Hospital based	Urban	1992–2002	Through delivery	31/47	NR	24.5	3.8	NR	28.3 (17–43)	1	NR	36.4	2.46
Mbuli <i>et al</i> <sup>1</sup>	Retrospective	South Africa	Hospital based	Urban	2003–2013	From presentation with pregnancy through discharge post-delivery	49/61	19.7	23.3	NR	NR	27.2 (NR)	1	27.9	28.9	2.24
Dey <i>et al</i> <sup>22</sup>	Retrospective	Ghana	Hospital based	Urban	2013–2014	Through delivery	6/7	100	NR	NR	NR	30.1 (27–32)	1	57.1	NR	NR
Iba Ba <i>et al</i> <sup>23</sup>	Retrospective and prospective	Gabon	Hospital based	Urban	2008–2018	Through delivery	16/22	100	25.4	4	16	39.9 (20–43)	1 for 21 pregnancies and 2 for one pregnancy	27.3	37.2	2.75

NR, not reported.

Of 15 anti-Ro/La-exposed fetuses, three developed neonatal lupus and one was lost. Preterm delivery, low birth weight and LN occurred in nine, two and one of 15 pregnancies in which low complement levels were detected. Of 11 aPL-exposed pregnancies, five and three ended with fetal loss and preterm delivery.

### Medications and APOs

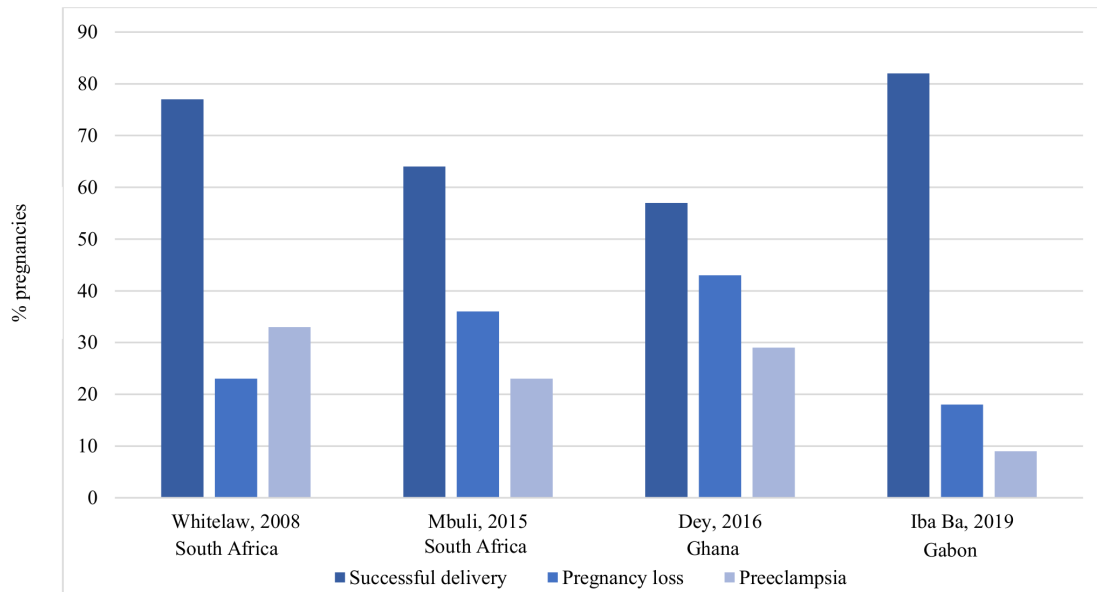
Drugs used during pregnancy (evaluated on 90 pregnancies) were glucocorticoids 77.8%, antimalarials (hydroxychloroquine/chloroquine) 63.3%, antihypertensives 35.5%, azathioprine 25.8%, ciclosporin 6.7% and low-dose aspirin 8.9%. Of 29 pregnancies with drug exposure-outcome data, seven pregnancies were lost. All of these had been exposed to hydroxychloroquine and prednisone, add-on drugs being used in five (aspirin), four (azathioprine) and two (antihypertensives) pregnancies, respectively. No special drug safety issue was raised.

### DISCUSSION

In this largest cohort of SLE pregnancies from sub-Saharan Africa, the overall rate of live birth was 70.8%. SLE flares occurred in 32.2% of pregnancies and the main APOs were pregnancy loss (29.2%), pre-eclampsia (24.8%), preterm birth (38.8%) and low birth weight (29.8%). The major factors associated with APOs were (history of/active) LN and SLE flares.

Our estimate of SLE flare during pregnancy is consistent with previous rates of 13% to 75%,<sup>4 24–27</sup> but higher than those found in two large cohorts including mostly women with stable or mild/moderate SLE at conception.<sup>4 27</sup> Beyond the influence of discrepancies in the definition of flare across studies, the difference observed may also be due to the inclusion of a substantial proportion of women with severe SLE at conception in our population.<sup>10 28</sup> The high prevalence of kidney disease prior to conception and the substantial use of glucocorticoids during pregnancy further support this assumption,<sup>14 29</sup> although SLE activity measures are lacking.

The APOs described here are the main APOs in women with SLE.<sup>2 14</sup> The rate of pregnancy loss is similar to that of a recent Malaysian cohort which included mostly women with unplanned pregnancies and severe SLE.<sup>29</sup> It is lower than that of a Chinese cohort which also reported a higher rate of flare than that found here.<sup>30</sup> Our rate of preterm birth is comparable with those of the aforementioned Malaysian cohort<sup>29</sup> and a Scandinavian group with severe SLE.<sup>11</sup> It is higher than the rate found in another Malaysian cohort including mostly women with stable SLE at conception.<sup>31</sup> These observations, together with knowledge that SLE activity is a major risk factor for APOs,<sup>1 4 11 29 30</sup> support the association between flare and APOs that we observed. Since LN is the most deleterious organ activity and even a history of LN heightens the risk of APOs,<sup>1 2 29</sup> our finding that LN was the main factor associated with APOs is not surprising. The most common LN-related APO is pre-eclampsia.<sup>2 14</sup> Accordingly, the

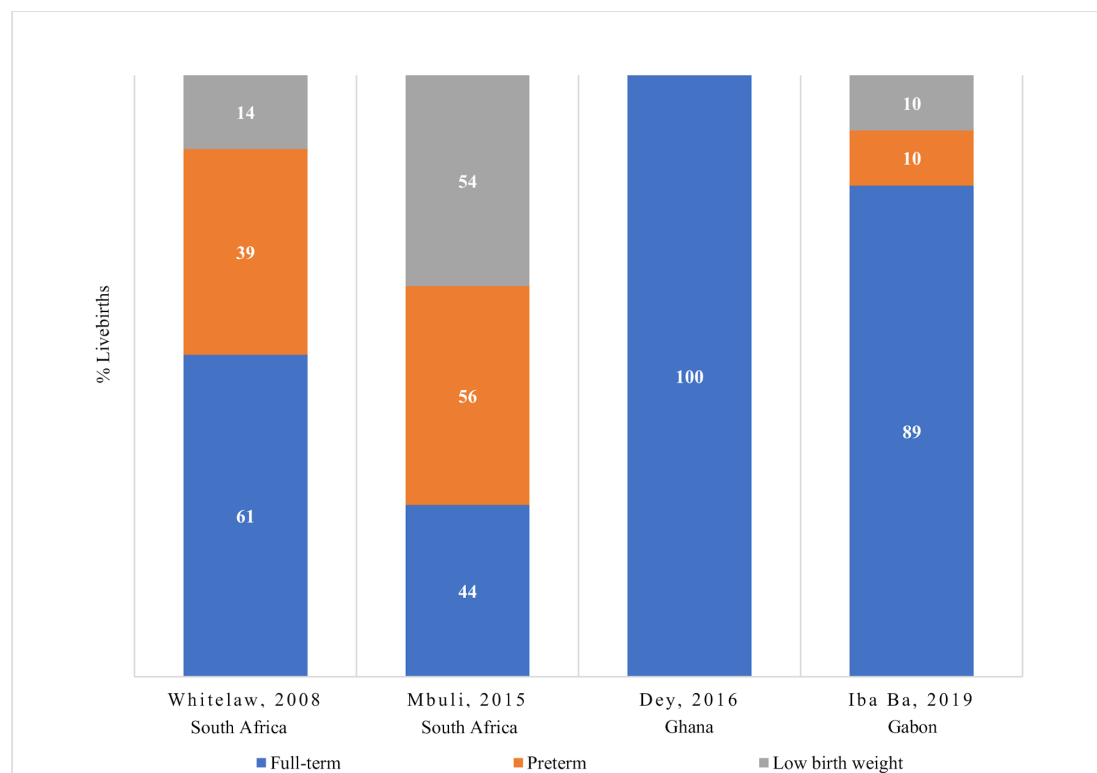


**Figure 2** Main obstetric outcomes in sub-Saharan African women with SLE.

high rate of pre-eclampsia likely ensued from that of LN. Indeed, the prevalence of pre-eclampsia is substantially higher than that found in most studies from other regions of the world,<sup>2 11 27 29 31</sup> although prevalence rates of up to 35% have been reported.<sup>14 32</sup> The increased rate of low birth weight may also be due to the high prevalence of pre-eclampsia which is one of its major risk factors.<sup>14</sup>

Taken collectively, our results suggest that advances in SLE management over the last decades<sup>6 33 34</sup> may not have greatly influenced the overall outcome of SLE pregnancies

in sub-Saharan Africa, as lower proportions of APOs were expected based on contemporary data from other parts of the world.<sup>2 4 10 11 31</sup> To reach optimum rates of successful pregnancies<sup>4 10 11</sup> in sub-Saharan Africa, strengthening of preconception counselling, risk stratification and monitoring of pregnancies are therefore paramount. In counselling women, a history of LN should engender apprehension, similarly as active SLE. Patient adherence to preconception counselling is likely with timely achievement of disease quiescence (eg, using the ‘treat-to-target’



**Figure 3** Main outcomes in neonates born to sub-Saharan African women with SLE.

strategy),<sup>34</sup> as young sub-Saharan African patients face societal expectations to give birth. Accurate risk stratification and close monitoring of pregnancies entail early identification of at-risk patients<sup>8 12 14</sup> and optimal assessment of maternal SLE activity<sup>35 36</sup> as well as fetal health throughout pregnancy. All these tasks can be well accomplished if more caring physicians (eg, rheumatologists, gynaecologists) are trained and relevant paraclinical examinations<sup>8 12 14</sup> (eg, autoantibodies, serum complement level, kidney biopsy and ultrasonography) are made available and affordable in sub-Saharan Africa. As SLE is not a priority for limited health budgets of sub-Saharan African states, we need a support from lupus funding bodies for capacity building in our laboratories, so as to make these tests locally available at affordable costs.

Limitations of this review reflect the low to moderate quality of included studies. First, their retrospective nature and aforementioned resource constraints have introduced selection and reporting biases in our results. For instance, information on drug adherence (an unresolved issue in SLE<sup>37 38</sup>) was missing, which precludes clear conclusions about drug safety on fetus. Furthermore, we did not assess the influence of ethnicity on our results due to incomplete data on ethnic distribution. Nevertheless, black women were majority, and other groups were still of African ancestry. The predominance of black women may notably explain the high rate of kidney involvement in this population, as SLE-related renal damage is highly prevalent in black Africans.<sup>15 39</sup> Second, no causal link was demonstrated between observed outcomes and associated factors. Notwithstanding these shortcomings, we provide a snapshot of the outcomes of SLE pregnancy and associated factors in sub-Saharan Africa. More compelling evidence is needed from a large multinational prospective cohort.

## CONCLUSION

A considerable proportion of pregnancies in women with SLE result in live births in sub-Saharan Africa. The main APOs are the same that have been reported in the other regions, but with high rates. The major factors associated with APOs are SLE flare and LN. High-quality evidence is needed for definite conclusions.

### Author affiliations

<sup>1</sup>Department of Internal Medicine and Specialties, Faculty of Medicine and Biomedical Sciences, University of Yaoundé I, Yaoundé, Cameroon

<sup>2</sup>Department of Gynecology and Obstetrics, Faculty of Medicine and Biomedical Sciences, University of Yaoundé I, Yaoundé, Cameroon

<sup>3</sup>Department of Epidemiology and Public Health, Centre Pasteur du Cameroun, Yaoundé, Cameroon

<sup>4</sup>Dermatology Unit, Yaoundé Gyneco-Obstetric and Pediatric Hospital, Yaoundé, Cameroon

<sup>5</sup>Department of Internal Medicine and Division of Rheumatology, Faculty of Medicine of Toamasina, Tamatave, Madagascar

<sup>6</sup>Department of Internal Medicine and Clinical Immunology, CHU and University of Lille, Lille, France

**Contributors** Conception and design: ME, JJB. Search strategy conception and application: ME, JJB. Study selection: ME, JRN. Data extraction: ME, KM, PT. Data synthesis and analysis: ME. Manuscript drafting: ME. Manuscript revision: GAN, SR,

EH, JJB, JRN, KM, PT. All authors approved this document. ME is the guarantor of the review.

**Funding** The authors have not declared a specific grant for this research from any funding agency in the public, commercial or not-for-profit sectors.

**Competing interests** None declared.

**Patient consent for publication** Not required.

**Provenance and peer review** Not commissioned; externally peer reviewed.

**Data availability statement** All data relevant to the study are included in the article or uploaded as supplementary information.

**Open access** This is an open access article distributed in accordance with the Creative Commons Attribution Non Commercial (CC BY-NC 4.0) license, which permits others to distribute, remix, adapt, build upon this work non-commercially, and license their derivative works on different terms, provided the original work is properly cited, appropriate credit is given, any changes made indicated, and the use is non-commercial. See: <http://creativecommons.org/licenses/by-nc/4.0/>.

### ORCID iD

Mickael Essouma <http://orcid.org/0000-0003-2364-5517>

## REFERENCES

- Andrade R, Sanchez ML, Alarcón GS, *et al*. Adverse pregnancy outcomes in women with systemic lupus erythematosus from a multiethnic US cohort: LUMINA (LV1) [corrected]. *Clin Exp Rheumatol* 2008;26:268–74.
- Smyth A, Oliveira GHM, Lahr BD, *et al*. A systematic review and meta-analysis of pregnancy outcomes in patients with systemic lupus erythematosus and lupus nephritis. *Clin J Am Soc Nephrol* 2010;5:2060–8.
- Andrade D, Kim M, Blanco LP, *et al*. Interferon- $\alpha$  and angiogenic dysregulation in pregnant lupus patients who develop preeclampsia. *Arthritis Rheumatol* 2015;67:977–87.
- Buyon JP, Kim MY, Guerra MM, *et al*. Predictors of pregnancy outcomes in patients with lupus: a cohort study. *Ann Intern Med* 2015;163:153–63.
- Mankee A, Petri M, Magder LS. Lupus anticoagulant, disease activity and low complement in the first trimester are predictive of pregnancy loss. *Lupus Sci Med* 2015;2:e000095.
- Götestam Skorpen C, Hoeltzenbein M, Tincani A, *et al*. The EULAR points to consider for use of antirheumatic drugs before pregnancy, and during pregnancy and lactation. *Ann Rheum Dis* 2016;75:795–810.
- Moroni G, Doria A, Giglio E, *et al*. Fetal outcome and recommendations of pregnancies in lupus nephritis in the 21st century. A prospective multicenter study. *J Autoimmun* 2016;74:6–12.
- Andreoli L, Bertias GK, Agmon-Levin N, *et al*. EULAR recommendations for women's health and the management of family planning, assisted reproduction, pregnancy and menopause in patients with systemic lupus erythematosus and/or antiphospholipid syndrome. *Ann Rheum Dis* 2017;76:476–85.
- Buyon JP, Kim MY, Guerra MM, *et al*. Kidney outcomes and risk factors for nephritis (flare/*de novo*) in a multiethnic cohort of pregnant patients with lupus. *Clin J Am Soc Nephrol* 2017;12:940–6.
- Eudy AM, Siega-Riz AM, Engel SM, *et al*. Effect of pregnancy on disease flares in patients with systemic lupus erythematosus. *Ann Rheum Dis* 2018;77:855–60.
- Skorpen CG, Lydersen S, Gilboe I-M, *et al*. Influence of disease activity and medications on offspring birth weight, pre-eclampsia and preterm birth in systemic lupus erythematosus: a population-based study. *Ann Rheum Dis* 2018;77:264–9.
- Sammaritano LR, Bermas BL, Chakravarty EE, *et al*. 2020 American College of Rheumatology guideline for the management of reproductive health in rheumatic and musculoskeletal diseases. *Arthritis Rheumatol* 2020;72:529–56.
- Clark CA, Spitzer KA, Laskin CA. Decrease in pregnancy loss rates in patients with systemic lupus erythematosus over a 40-year period. *J Rheumatol* 2005;32:1709–12.
- Limaye MA, Buyon JP, Cuneo BF, *et al*. A review of fetal and neonatal consequences of maternal systemic lupus erythematosus. *Prenat Diagn* 2020. doi:10.1002/pd.5709. [Epub ahead of print: 13 Apr 2020].
- Essouma M, Nkeck JR, Endomba FT, *et al*. Systemic lupus erythematosus in native sub-Saharan Africans: a systematic review and meta-analysis. *J Autoimmun* 2020;106:102348.
- Arksey H, O'Malley L. Scoping studies: towards a methodological framework. *Int J Soc Res Methodol* 2005;8:19–32.

- 17 Munn Z, Peters MDJ, Stern C, *et al.* Systematic review or scoping review? Guidance for authors when choosing between a systematic or scoping review approach. *BMC Med Res Methodol* 2018;18:143.
- 18 United Nations Statistics Division, 2020. Available: <https://unstats.un.org/unsd/methodology/m49/>
- 19 Hochberg MC. Updating the American College of Rheumatology revised criteria for the classification of systemic lupus erythematosus. *Arthritis Rheum* 1997;40:1725.
- 20 Whitelaw DA, Hall D, Kotze T. Pregnancy in systemic lupus erythematosus: a retrospective study from a developing community. *Clin Rheumatol* 2008;27:577–80.
- 21 Mbuli L, Mapiye D, Okpechi I. Lupus nephritis is associated with poor pregnancy outcomes in pregnant SLE patients in Cape Town: a retrospective analysis. *Pan Afr Med J* 2015;22:365.
- 22 Dey ID, Coleman J, Kwarko H, *et al.* Outcome of pregnancy in patients with systemic lupus erythematosus at Korle-bu teaching hospital. *Ghana Med J* 2016;50:72–7.
- 23 Iba Ba J, Nseng N, Ntsame N. Grossesses au cours de maladies auto-immunes en zone subsaharienne, travers l'expérience du service de médecine du CHU de Libreville. *Médecine Santé Trop* 2019;29:206–12.
- 24 Lockshin MD. Pregnancy does not cause systemic lupus erythematosus to worsen. *Arthritis Rheum* 1989;32:665–70.
- 25 Nossent HC, Swaak TJ. Systemic lupus erythematosus. VI. Analysis of the interrelationship with pregnancy. *J Rheumatol* 1990;17:771–6.
- 26 Cavallasca JA, Laborde HA, Ruda-Vega H, *et al.* Maternal and fetal outcomes of 72 pregnancies in Argentine patients with systemic lupus erythematosus (SLE). *Clin Rheumatol* 2008;27:41–6.
- 27 Wu J, Ma J, Bao C, *et al.* Pregnancy outcomes among Chinese women with and without systemic lupus erythematosus: a retrospective cohort study. *BMJ Open* 2018;8:e020909.
- 28 Davis-Porada J, Kim MY, Guerra MM, *et al.* Low frequency of flares during pregnancy and post-partum in stable lupus patients. *Arthritis Res Ther* 2020;22:52.
- 29 Shaharir SS, Mohamed Said MS, Mohd R, *et al.* Predictors of SLE relapse in pregnancy and post-partum among multi-ethnic patients in Malaysia. *PLoS One* 2019;14:e0222343.
- 30 Ku M, Guo S, Shang W, *et al.* Pregnancy outcomes in Chinese patients with systemic lupus erythematosus (SLE): a retrospective study of 109 pregnancies. *PLoS One* 2016;11:e0159364.
- 31 Teh CL, Wan SA, Cheong YK, *et al.* Systemic lupus erythematosus pregnancies: ten-year data from a single centre in Malaysia. *Lupus* 2017;26:218–23.
- 32 Lateef A, Petri M. Systemic lupus erythematosus and pregnancy. *Rheum Dis Clin North Am* 2017;43:215–26.
- 33 Fanourakis A, Bertsias G. Changing paradigms in the treatment of systemic lupus erythematosus. *Lupus Sci Med* 2019;6:e000310.
- 34 Ríos-Garcés R, Espinosa G, van Vollenhoven R, *et al.* Treat-to-target in systemic lupus erythematosus: where are we? *Eur J Intern Med* 2020;74:29–34.
- 35 Buyon JP, Kalunian KC, Ramsey-Goldman R, *et al.* Assessing disease activity in SLE patients during pregnancy. *Lupus* 1999;8:677–84.
- 36 Ruiz-Irastorza G, Khamashta MA, Gordon C, *et al.* Measuring systemic lupus erythematosus activity during pregnancy: validation of the lupus activity index in pregnancy scale. *Arthritis Rheum* 2004;51:78–82.
- 37 Costedoat-Chalumeau N, Houssiau F, Izmirly P, *et al.* A prospective international study on adherence to treatment in 305 patients with flaring SLE: assessment by drug levels and self-administered questionnaires. *Clin Pharmacol Ther* 2019;106:374–82.
- 38 Feldman CH, Collins J, Zhang Z, *et al.* Dynamic patterns and predictors of hydroxychloroquine nonadherence among Medicaid beneficiaries with systemic lupus erythematosus. *Semin Arthritis Rheum* 2018;48:205–13.
- 39 Almaani S, Meara A, Rovin BH. Update on lupus nephritis. *Clin J Am Soc Nephrol* 2017;12:825–35.