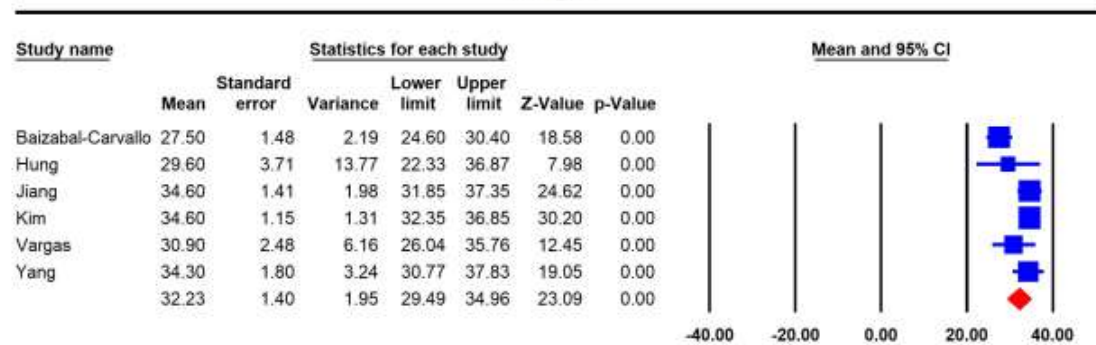
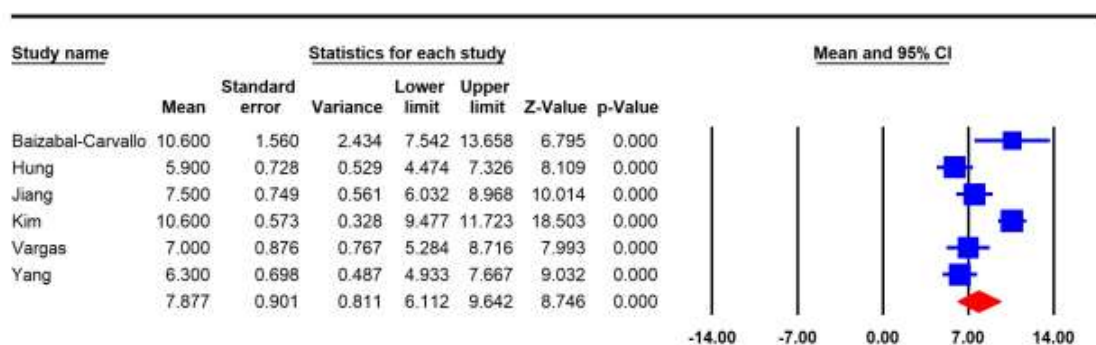


Supplementary Figure S1.

Figures show funnel plots of meta-analyses of 1) age 2) SLEDAI 3) CNS frequency rate 4) meningitis 5) abscess 6) headache 7) fever 8) nausea or vomiting 9) meningeal signs 10) altered mental status 11) seizure 12) focal neurological deficit 13) cases on oral corticosteroids 14) mean daily prednisone dose 15) Cyclophosphamide 16) Hydroxychloroquine 17) Azathioprine 18) No drugs 19) *Cryptococcus neoformans* 20) *Mycobacterium tuberculosis* 21) *Listeria monocytogenes* 22) persistent neurologic sequelae 23) relapse 24) mortality

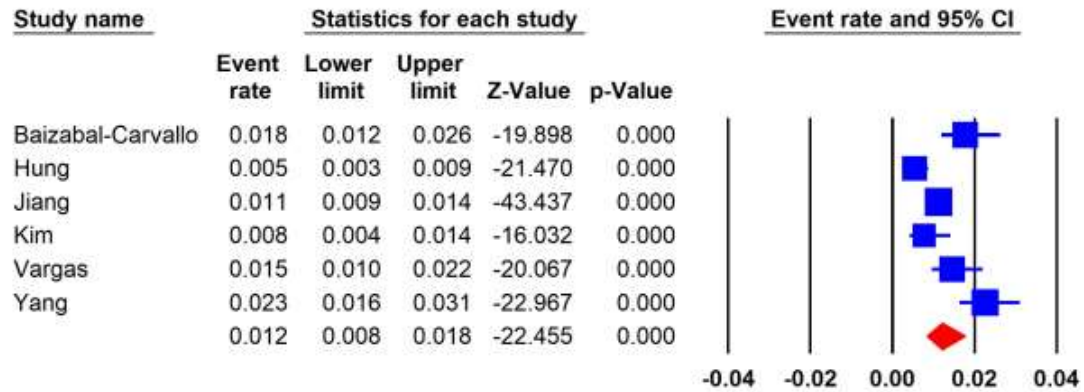
Age

1.

SLEDAI

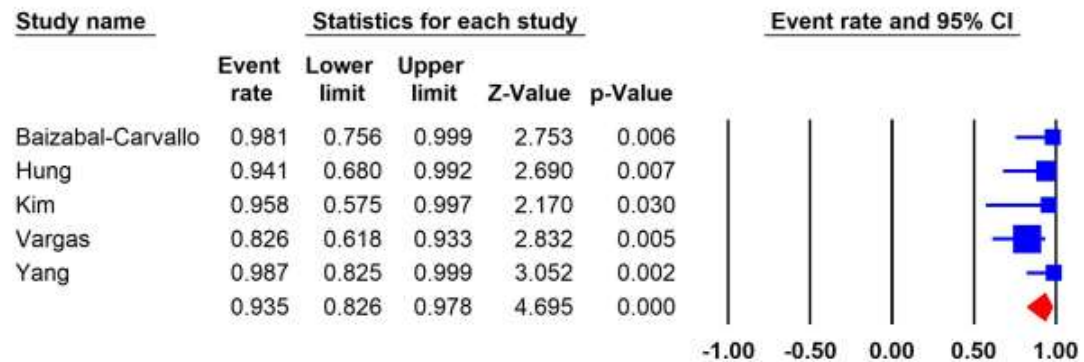
2.

CNS Infection Frequency Rate



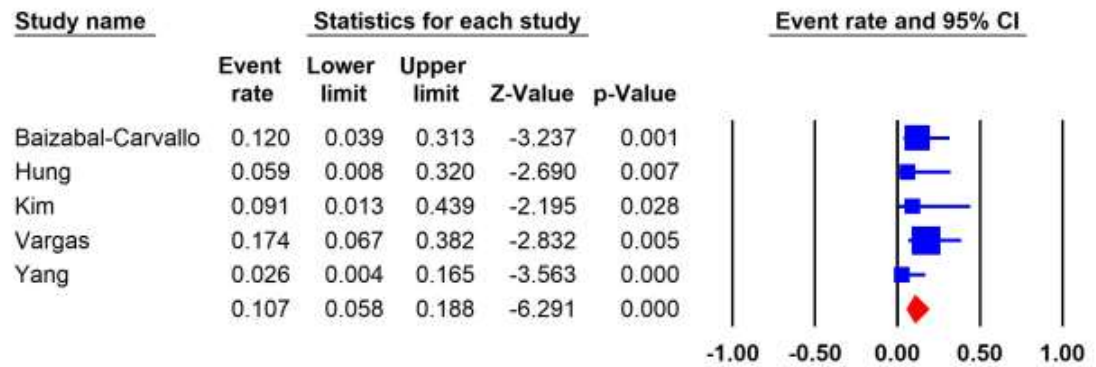
3.

Meningitis



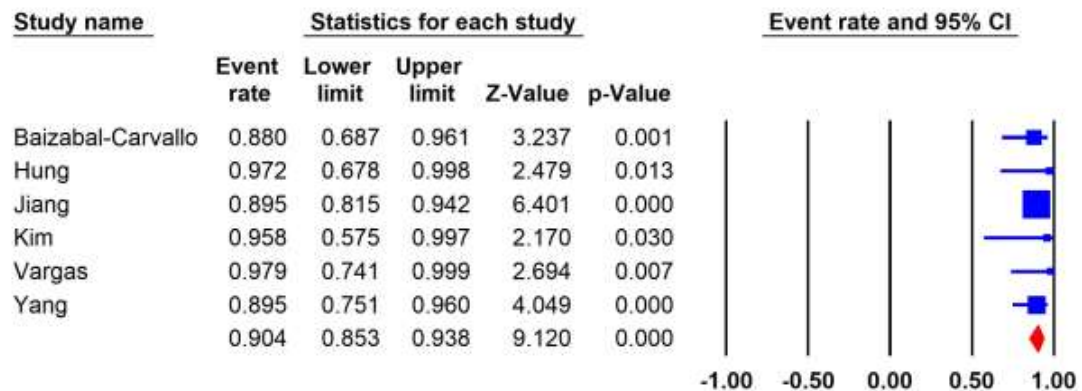
4.

Abscess



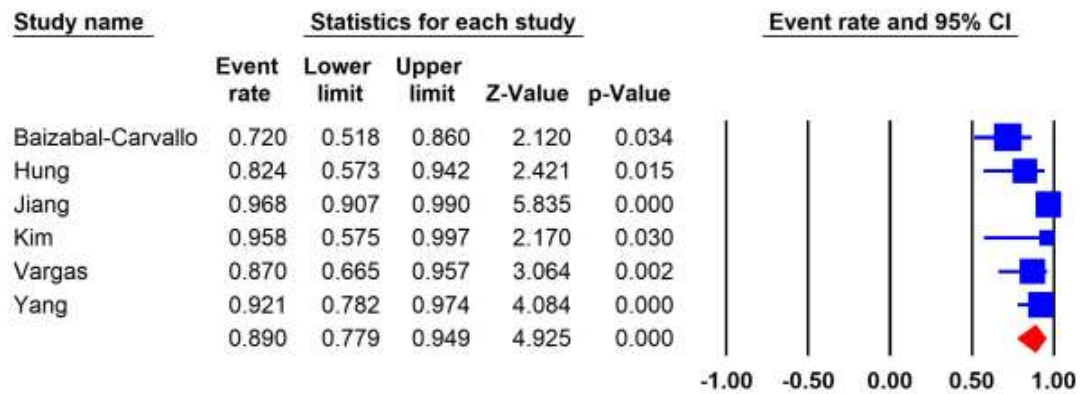
5.

Headache



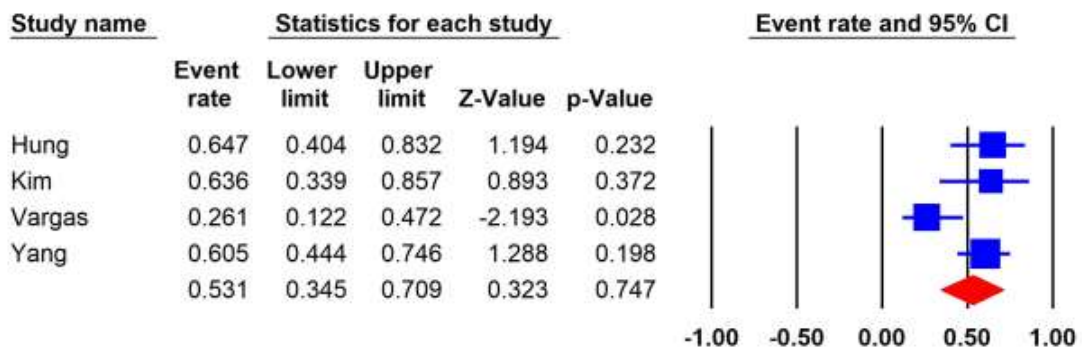
6.

Fever



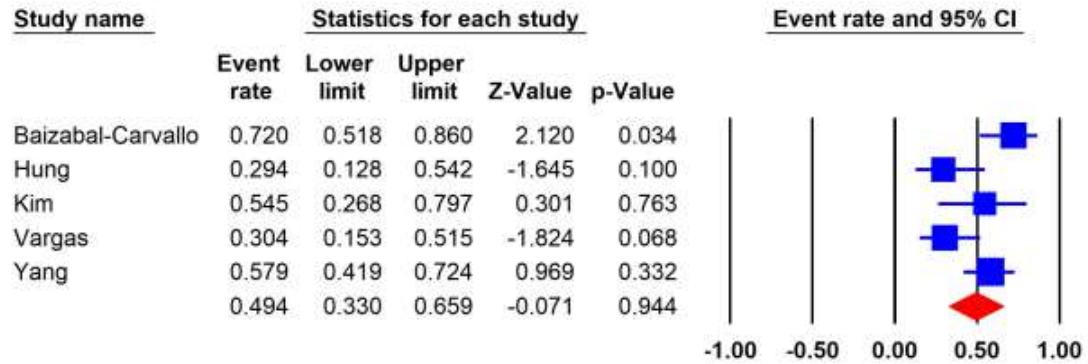
7.

Nausea or Vomiting



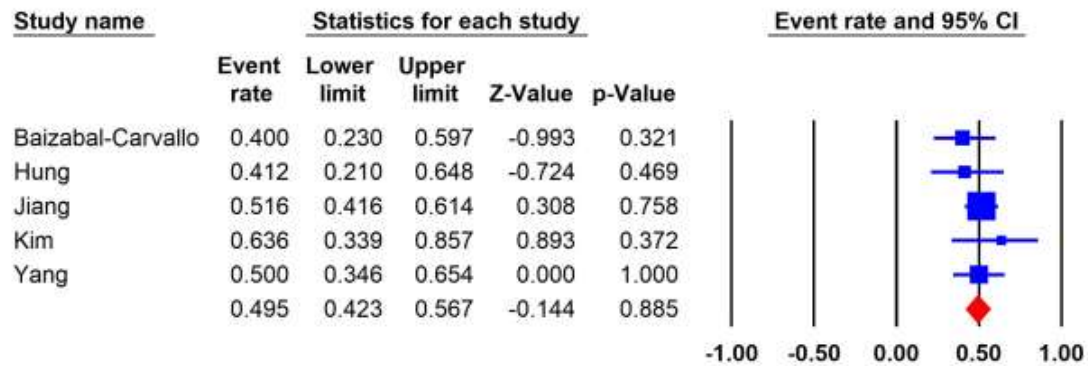
8.

Meningeal Signs



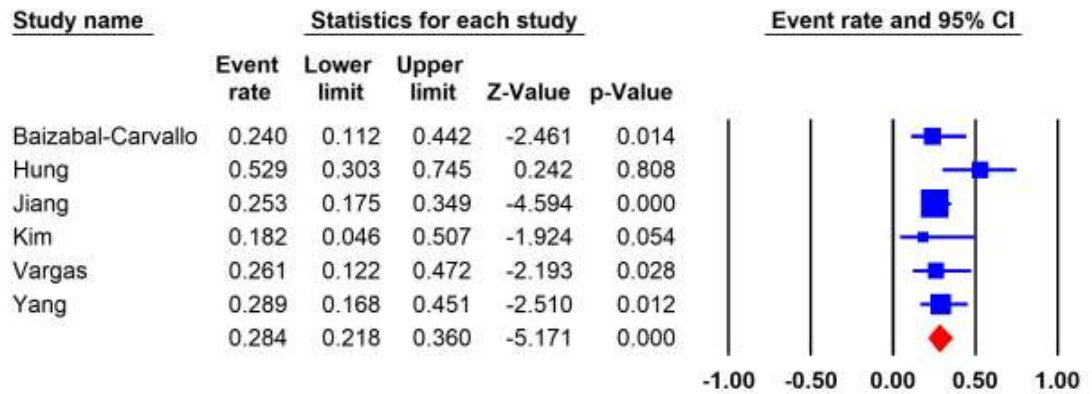
9.

Altered Mental Status



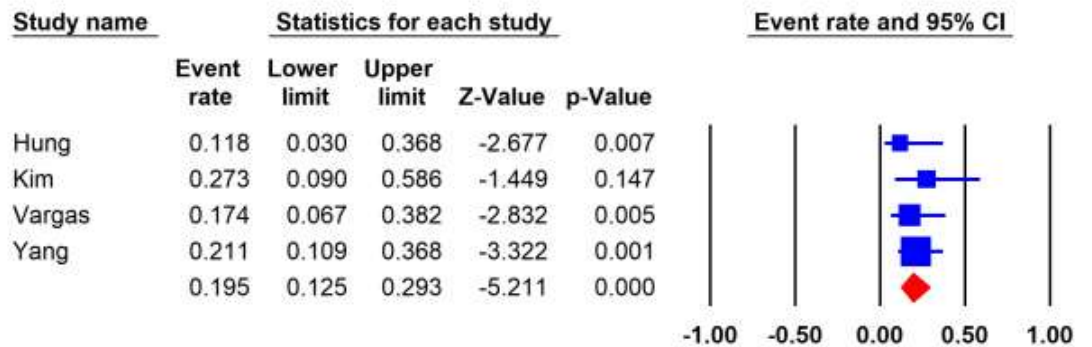
10.

Seizure



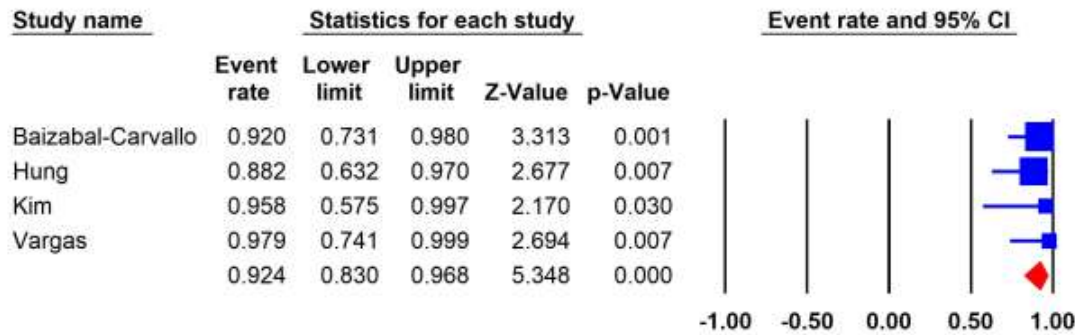
11.

Focal Neurologic Deficit



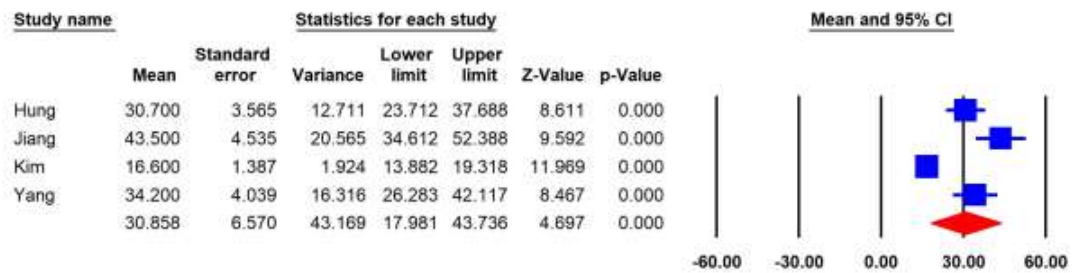
12.

Oral Prednisone



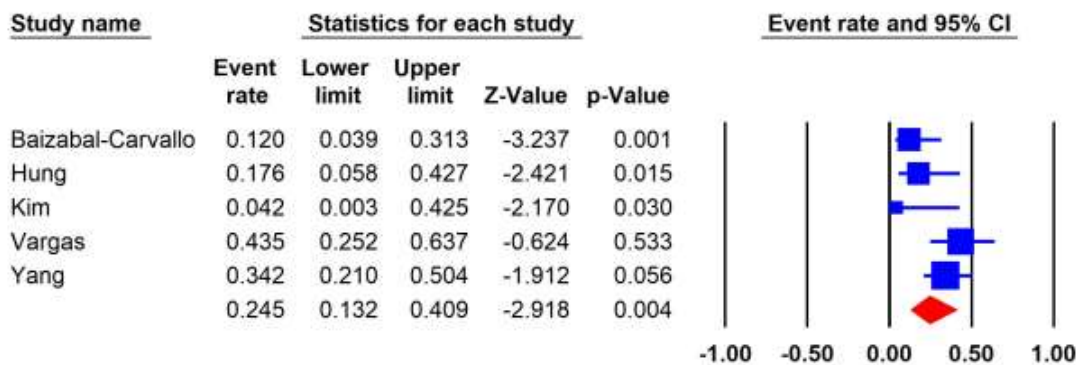
13.

Prednisone Dose



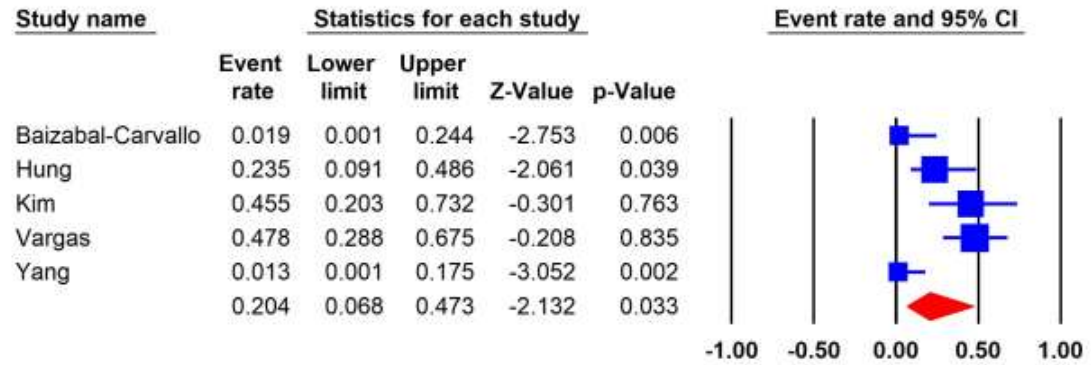
14. mg/day

Cyclophosphamide



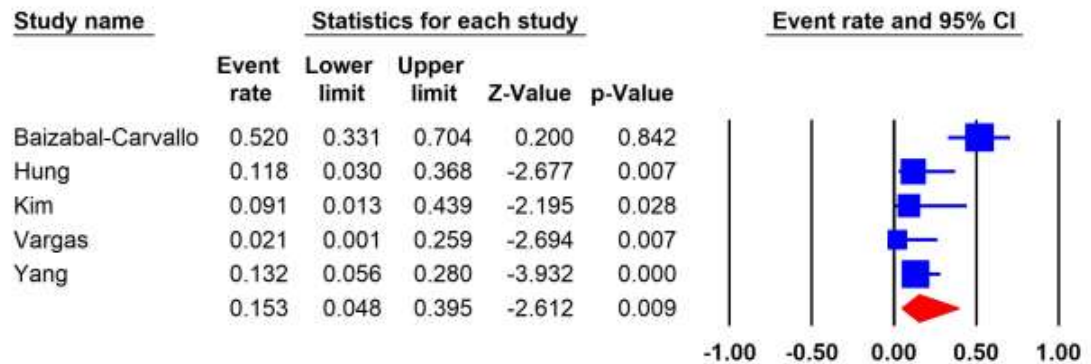
15.

Hydroxychloroquine



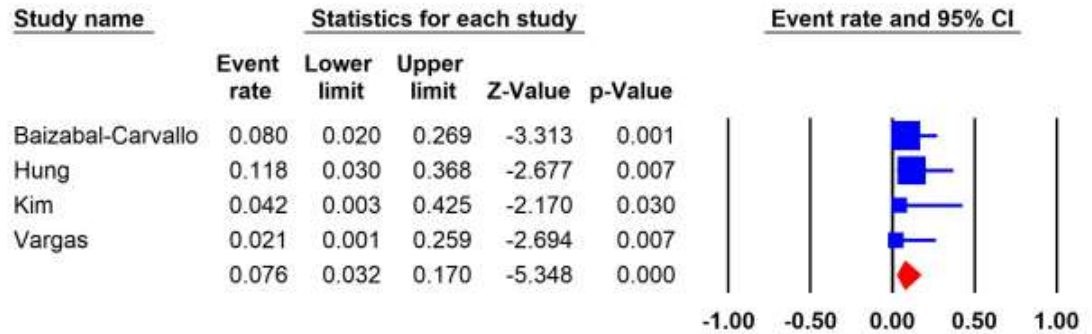
16.

Azathioprine



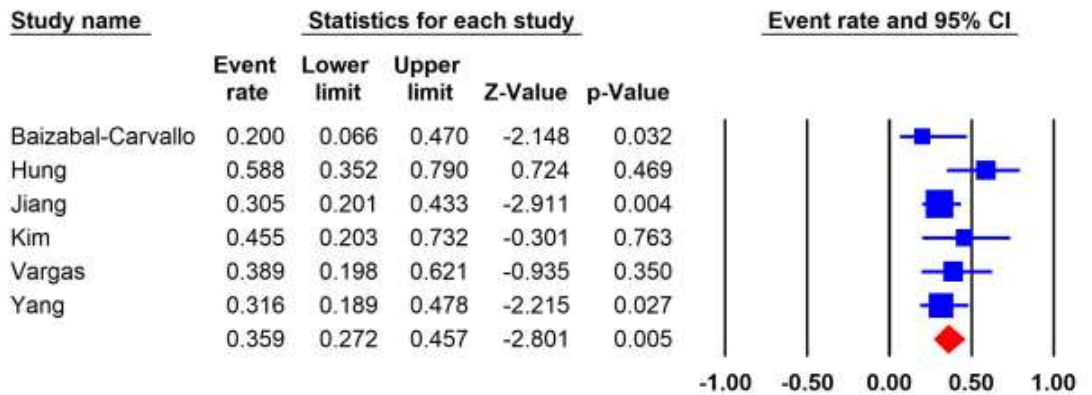
17.

No Medications



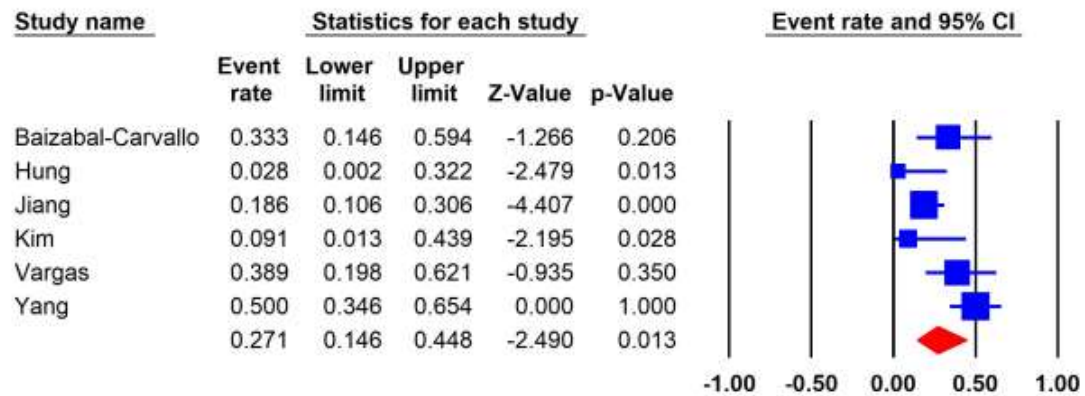
18.

Cryptococcus neoformans



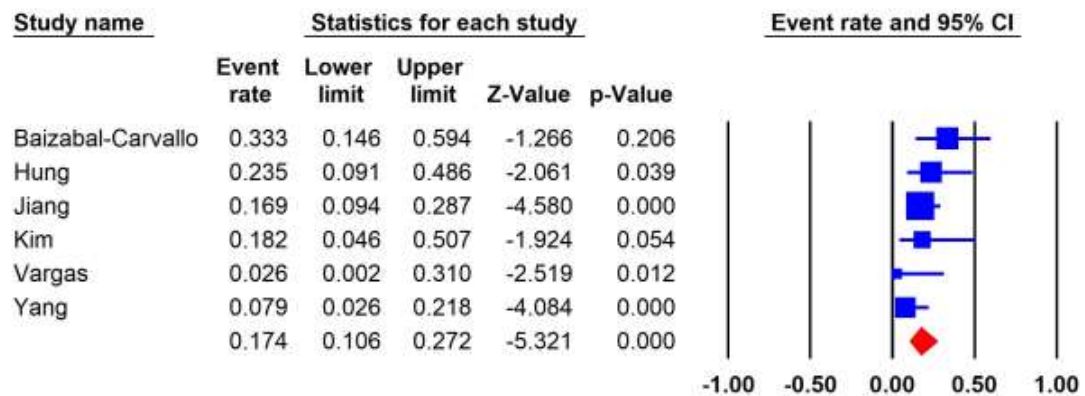
19.

Mycobacterium tuberculosis



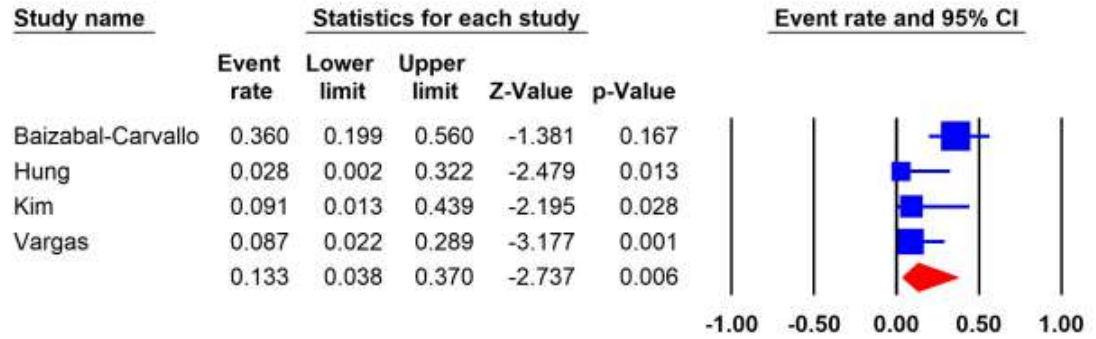
20.

Listeria monocytogenes



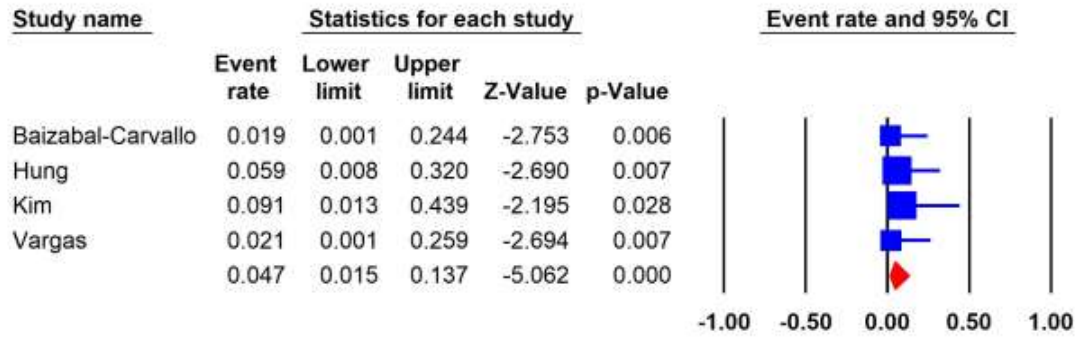
21.

Persistent Neurologic Sequelae



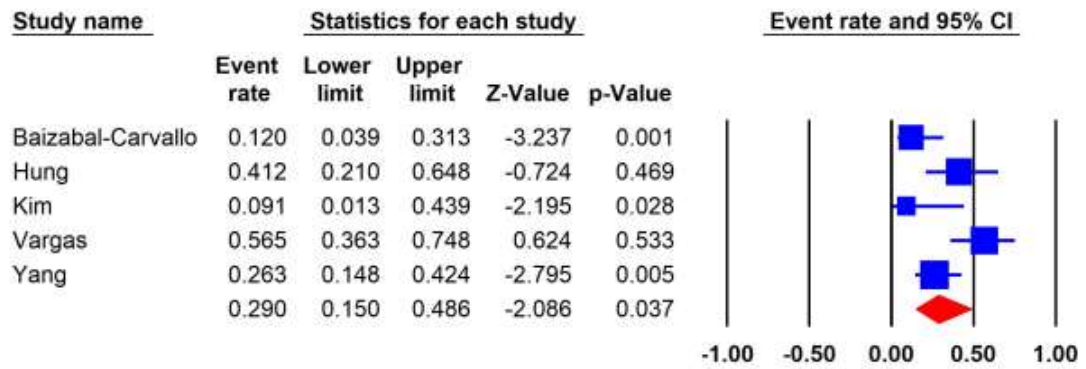
22.

Relapse



23.

Mortality



24.