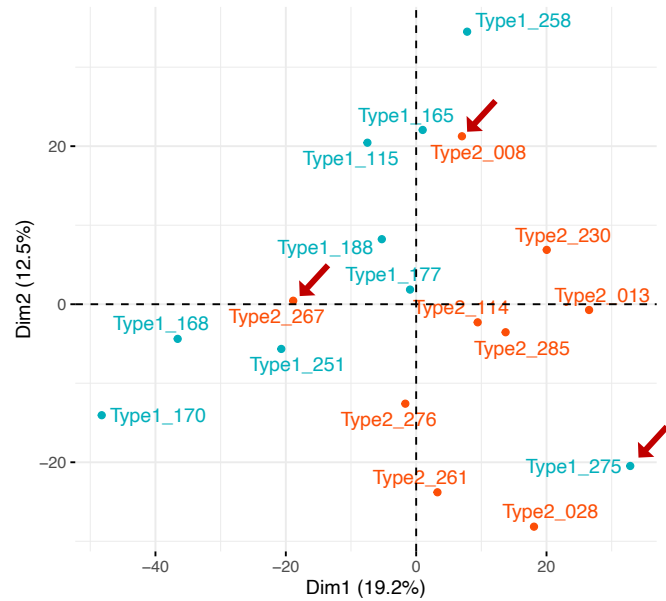


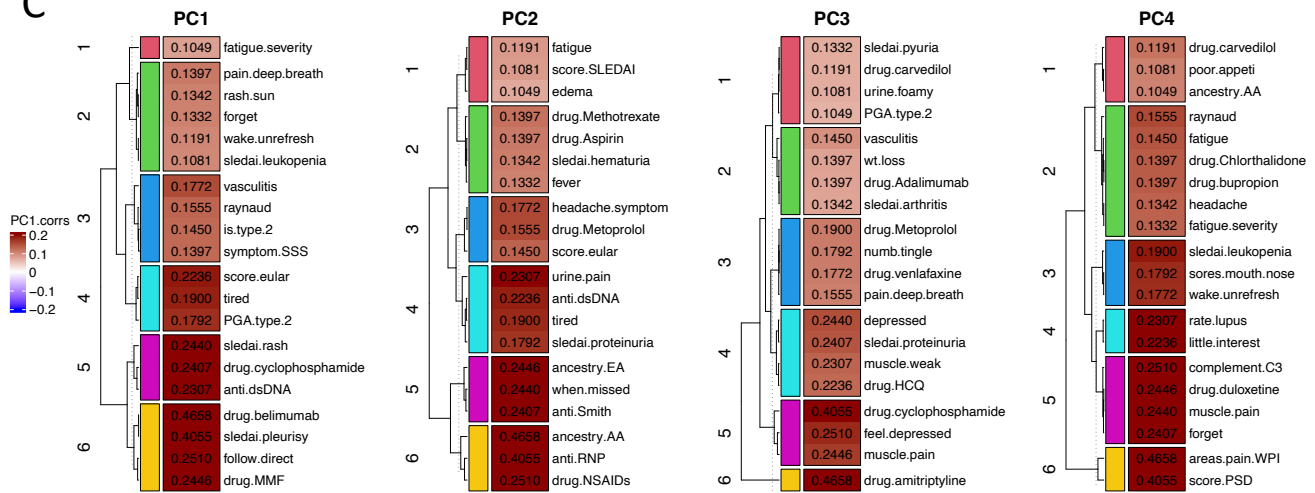
A

Duke Patient Characteristics				
Type.1 patients	9			
Type.2 patients	9			
Patient genders	17 female, 1 male			
No. ancestral backgrounds	2 (11 African ancestry: AA, 6 European ancestry: EA, 1 Hispanic ancestry: HA)			
Total no. sample attributes	105 (see supplementary table)			
PC variance explained	PC1	PC2	PC3	PC4
	20.9%	16.9%	15.3%	13.2%

B



C



Supplementary figure S1. Patient heterogeneity and gene expression dimensionality reduction using principal component (PC) analysis of variance. Table of study participants and explained variance of first 4 PCs totaling to 66.3% (A). Biplot of PC2:PC1 of top 5k rowVar gene normalized expressions. Sample points colored by patient type. Red arrows indicate PCA outliers (B). Top 20 patient clinical/molecular attributes correlating to each of the top 4 PCs. Cells indicate r^2 correlation values and range from -0.2 to +0.2. Trait rows clustered by $k=6$ Euclidean distances (C).