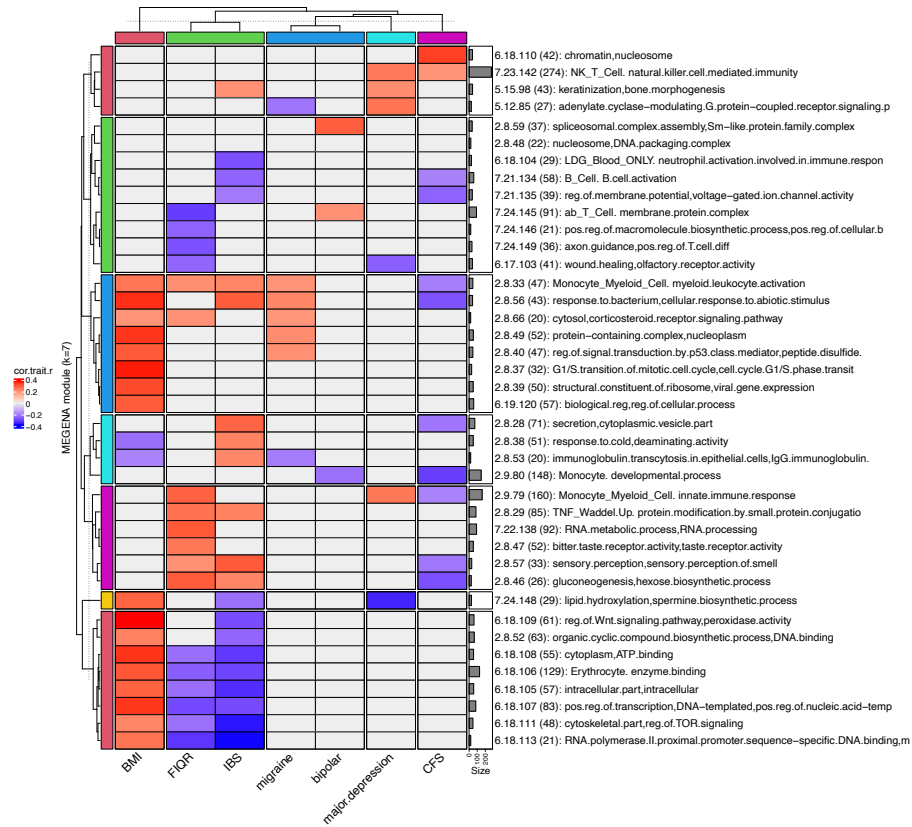
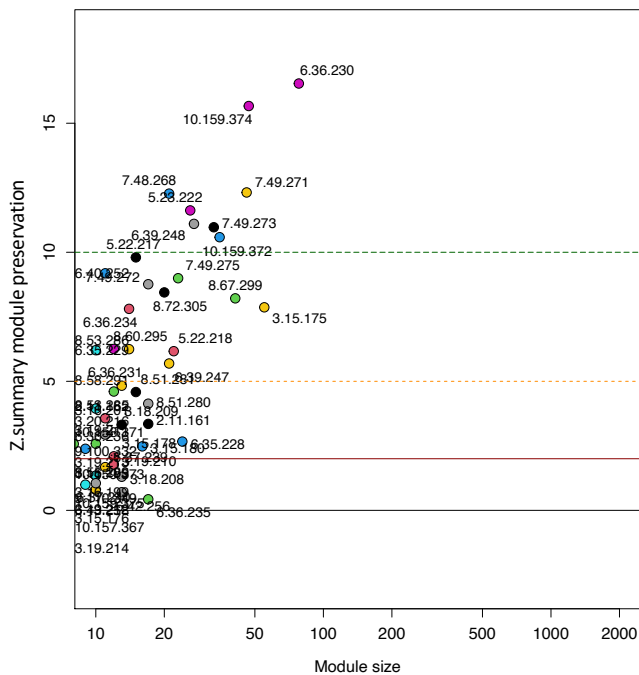


A



B



Supplementary figure S8. Type 1/2 SLE MEGENA gen3 module preservation amongst the gen3 GSE67311 fibromyalgia (FM) MEGENA modules. Heatmap of the top 40 gen3 MEs significantly ($p < 0.2$) correlated to the seven available patient traits in GSE67311 (A). Module preservation composite zsummary (z.summ) statistics calculated using the gen3 type 1/2 SLE modules as reference tested against the gen3 GSE67311 FM modules. Modules are considered minimally preserved with a z.summ > 2 (red line), moderately preserved at z.summ > 5 (orange line), and well preserved at z.summ > 10 (green line) (B).